

A delicious labyrinth

20

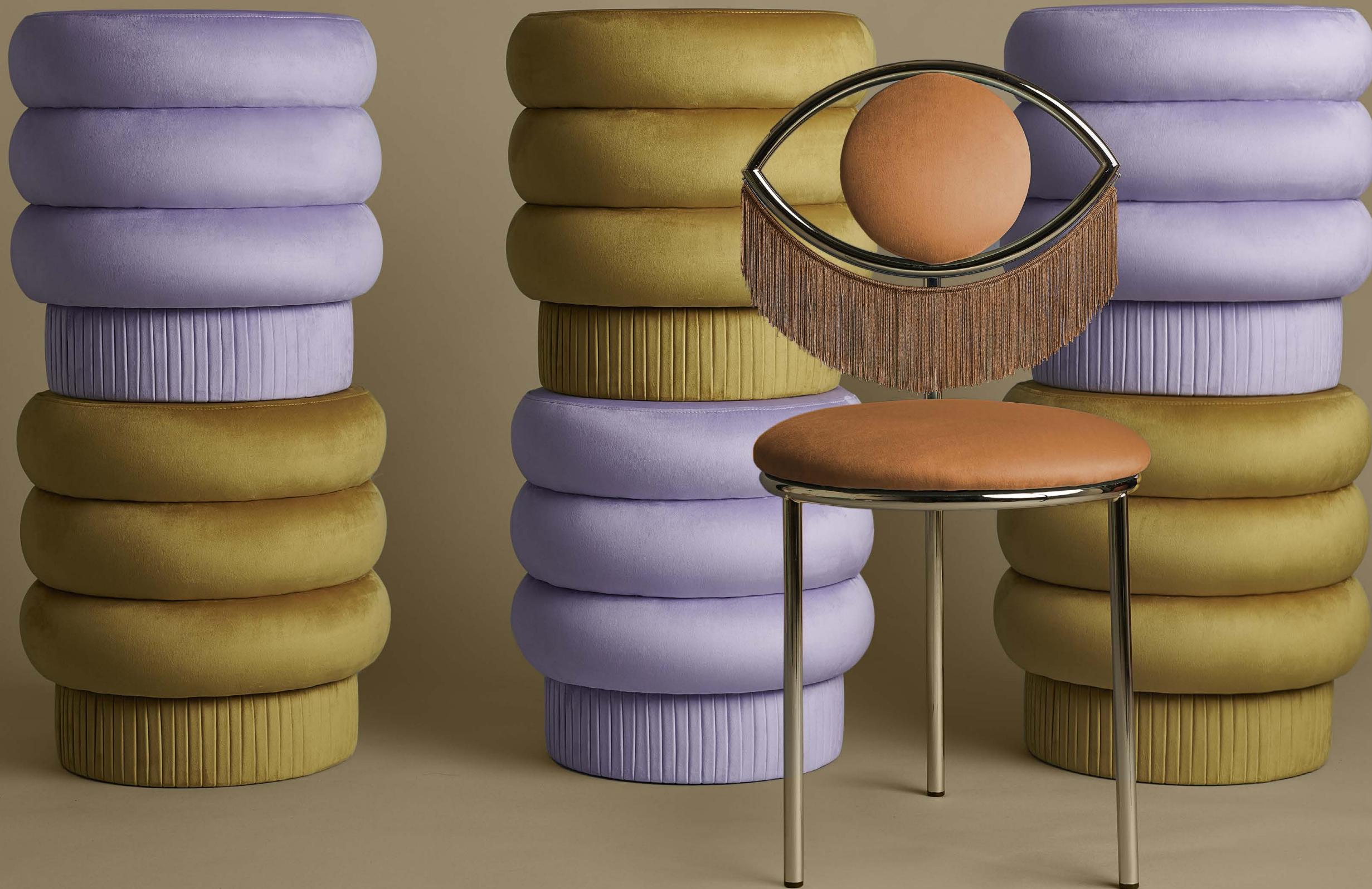
Exotic rhythms, champagne and velvet words

We were dancing when we
found a sign that said “back to
the future” and so we followed it.
The sign took us here, to a sexy,
lux and fun dimension. We keep
on dancing, we won’t stop.

WINK CHAIR

DESIGNED BY MASQUESPACIO





A subtle, suggestive and delicate way of looking. A look with a lot of craftiness, an eye that can only focus on exquisite vibes while dancing to the rhythm of the music with its fringes. She can't stop playing "I spy with my little eye", and she sees everything from her eye.

But, what do you see? Depending on your imagination. With a neutral vision it will be a chair, turning on the psychedelic mode of your pupils it will become a dancing eye and with cosmic-extraterrestrial lenses you will see the eye converted into Saturn and dressed in a Charleston dress.





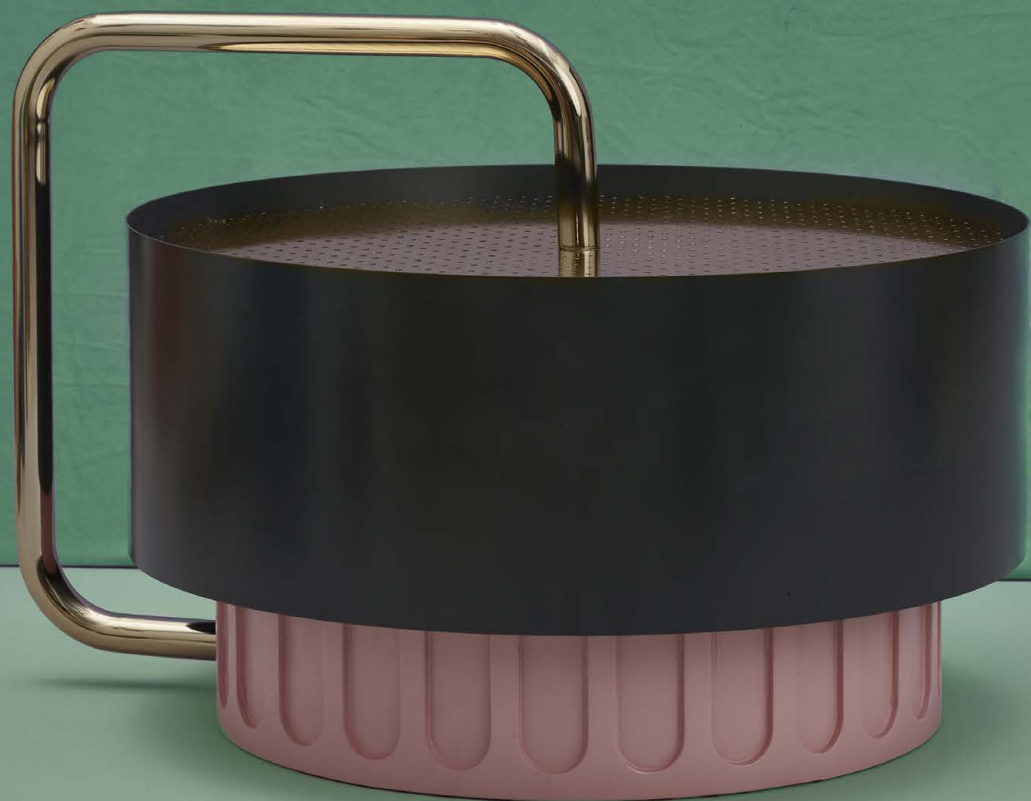


Zupanc has created Juliette. A well-mannered chair that knows when to go crazy. A chair that blushes but talks without limits nor filters. A chair that dances without control, but know when to keep calm. A chair that aims to add an uninhibited and spontaneous touch to delicate and sexy spaces. The balance between madness and discretion, between serenity and debauchery. The perfect balance becomes a chair.

Its rounded shapes take our minds back to the seventies while caressing our thoughts with its velvet.



CHICCERA



DESIGNED BY ELENA SALMISTRARO



Cicchera Table in her previous life, was a side table that adored being the queen of the coffee moment, she enjoyed listening to conversations between espressos and capuccinos, holding all kinds of cups (sober ones, rococos, with weird shapes and vibrant colours...), she loved to feel the heat of the coffee on her...

This is why the designer Elena Salmistraro has decided to give her a new life and turn her into a cup of coffee playing with the scales and turning the story around. Now the cup of coffee becomes a side table.





TROPICANA



DESIGNED BY SERENA CONFALONIERI

Exotic and Latin rhythms, tropical delusions and hot weather. In that corner of Serena Confalonieri's imagination is born Tropicana. A collection of 2 lighting pieces: a suspension lamp and a allamp.

Tropicana is inspired by the purity and provocativeness of tropical areas. Even its shape can remind of a large and suggestive flower, with bright colors, that hangs from the ceiling.

Tropicana is also inspired by the stimulating heat that traditional fans made with palm leaves try to scare away. But this time, those retro fans will no longer cool down the temperature but they will light up the nights of guaguancó, mambo, Mai Tai and delicious conversations.

HOUTIQUE.



WOODY POUF







POMPA POUF

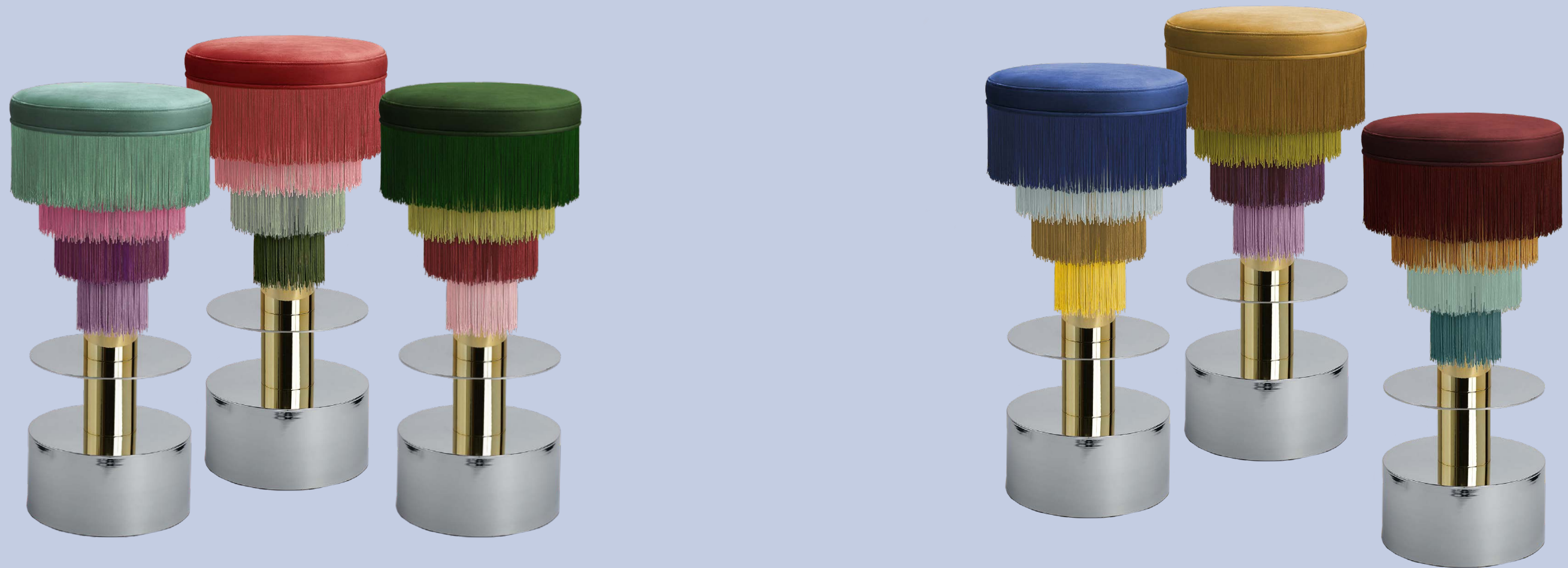






DÉJÀ VU STOOL

HOUTIQUE.



DESIGNED BY MASQUESPACIO

041



I never got to believe those stories
of people who say that, sometimes,
they realize that they have already
dreamed / lived / experienced a
moment / idea / sensation, but it is
really no true. I've always thought
they were poetic, but, of course,

I never thought they were true.
Yes, I was naive, but look at me now...
I am the result of an overwhelming
and delicious déjà vu, a kind of
dream that came true.



BONNET MIRROW

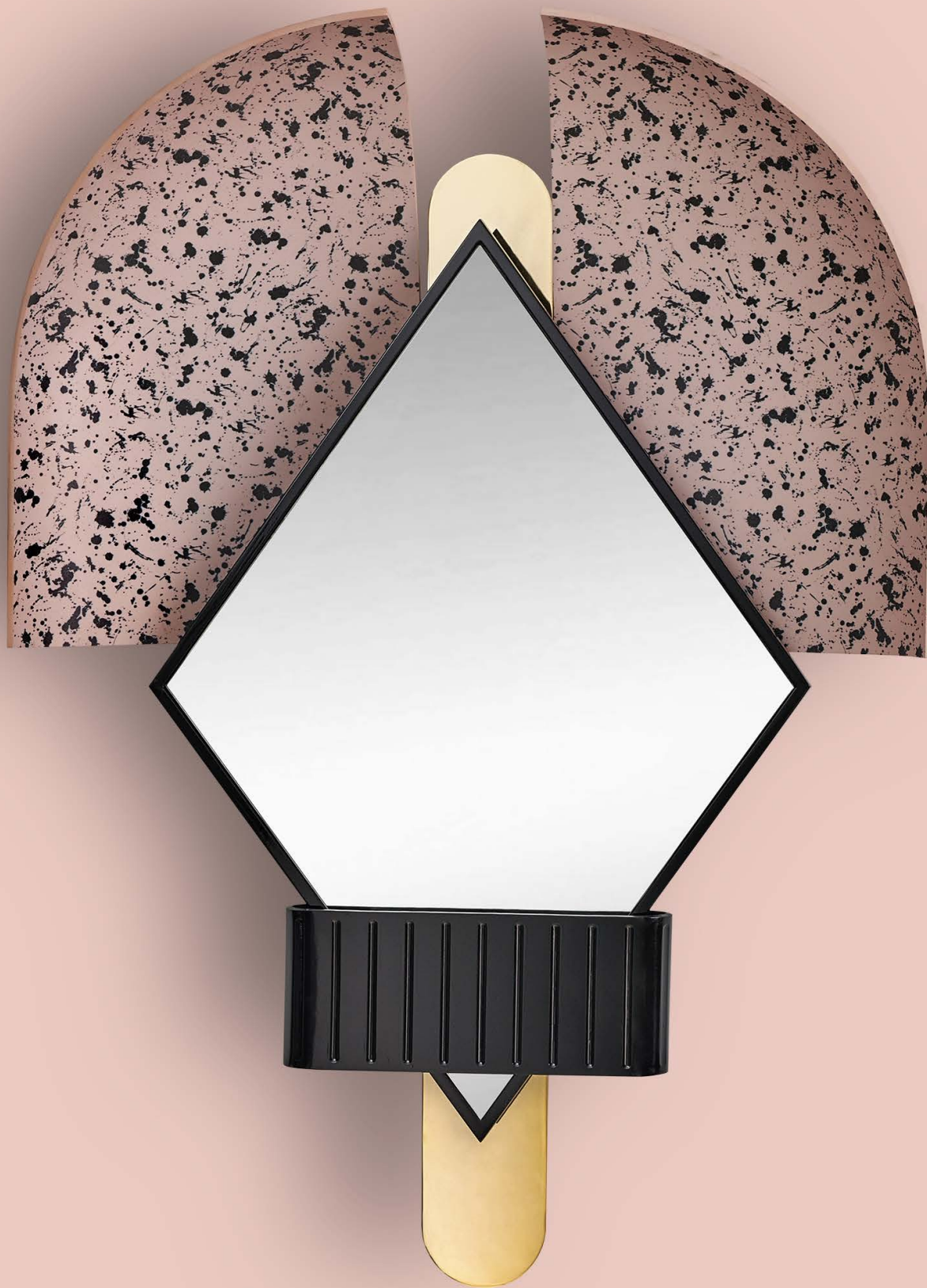
HOUTIQUE.

DESIGNED BY ELENA SALMISTRARO



Following Houtique's essence, the Bonnet mirror, created by the Italian designer Elena Salmistraro, brings together the past and the present to create a new exciting future through reflections.

The fluid and subtle waves of a pamelà hat. The stories hidden in a Victorian hat. The blurry reflections of a mirror. The marks left from those bizarre good old days.



JIMI SOFA

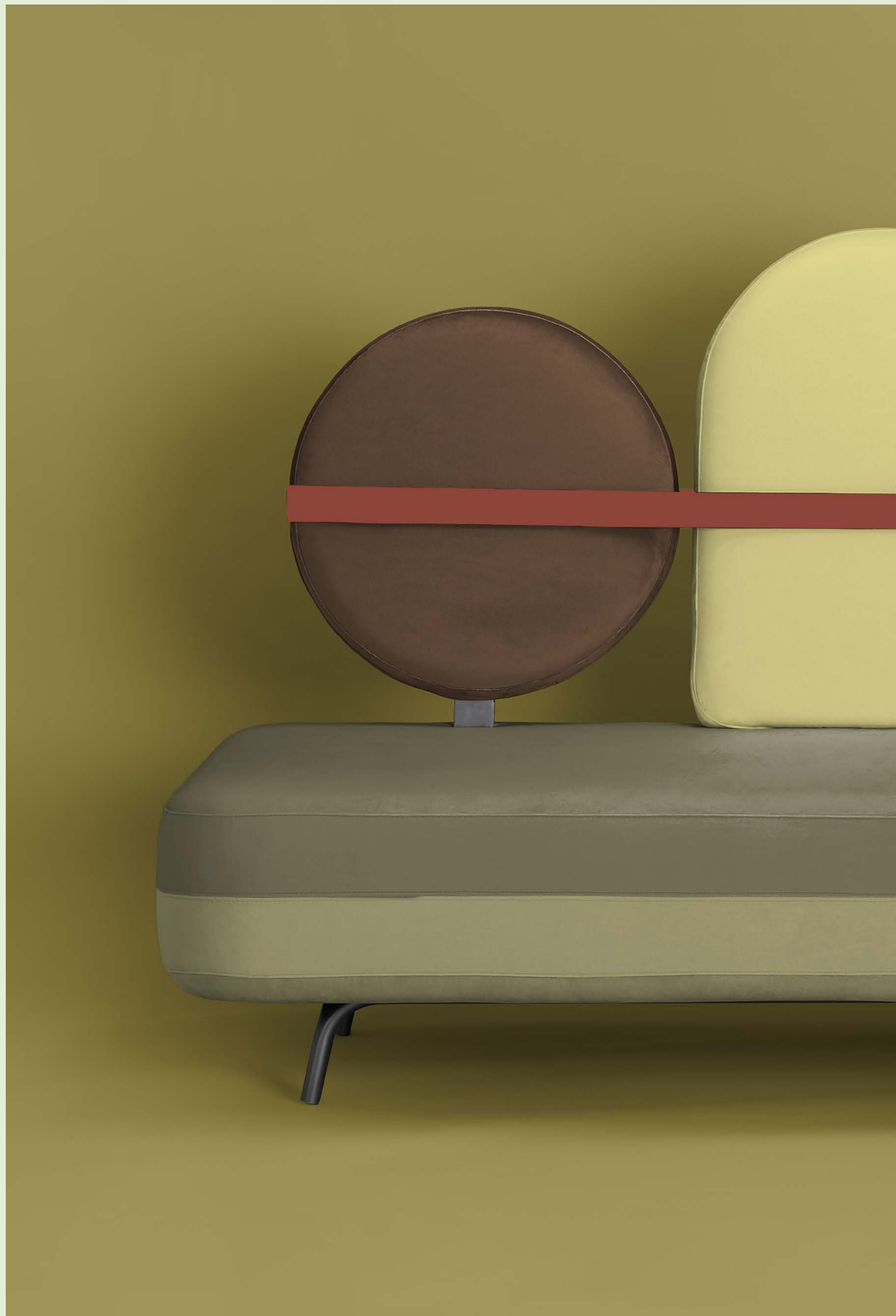
HOUTIQUE.

DESIGNED BY ELENA SALMISTRARO









Hi, this is me, Jimi. I love owers, hand written letters and huge rounded hats.

Apart from being an expert in solving dramas, I can also create my own vital paradise by watching the world through an exquisite perspective; through my big rounded eyes covered in a velvety mask to see / hear / feel / touch the world in a singular, delicious and delicate way. I will show it every time you sit on me.

HOUTIQUE.

WINK

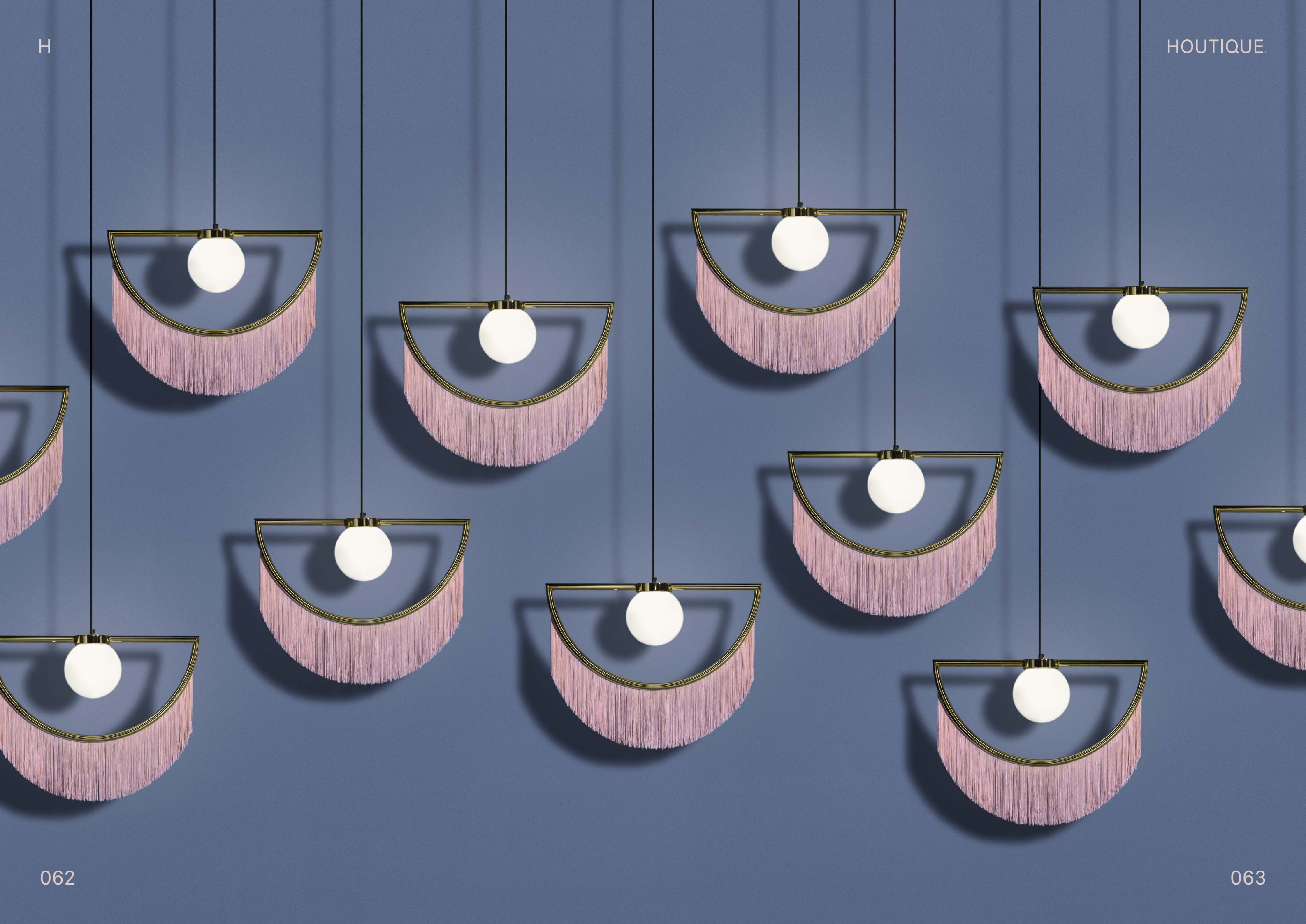
DESIGNED BY MASQUESPACIO



H



Lamps can wink their eyes, and they can also do it in the most elegant way: with fringes, gold and delicacy. From the collaboration of Masquespacio and Houtique appears Wink, a lamp that brings past and future vibes at the same time.



WINK STANDING





Wink was tired of the panoramic views from the roof, she wanted a change in her life, a new point of view, she wanted to know how it felt to stand as a person. Same essence, same atmosphere of past and future, same delicacy, but different position to make darkness run away.

HOUTIQUE.





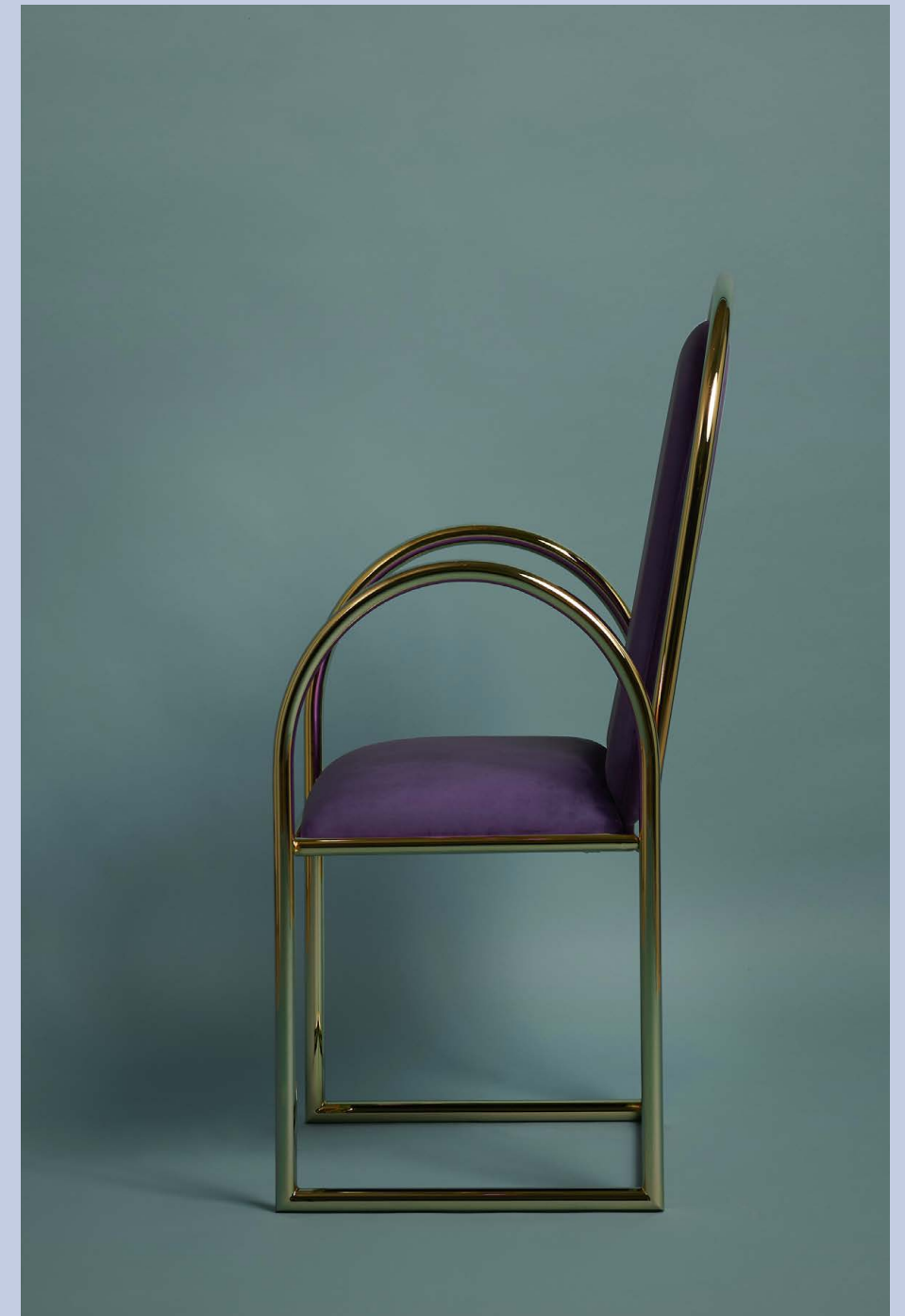
ARCO

DESIGNED BY MASQUESPACIO

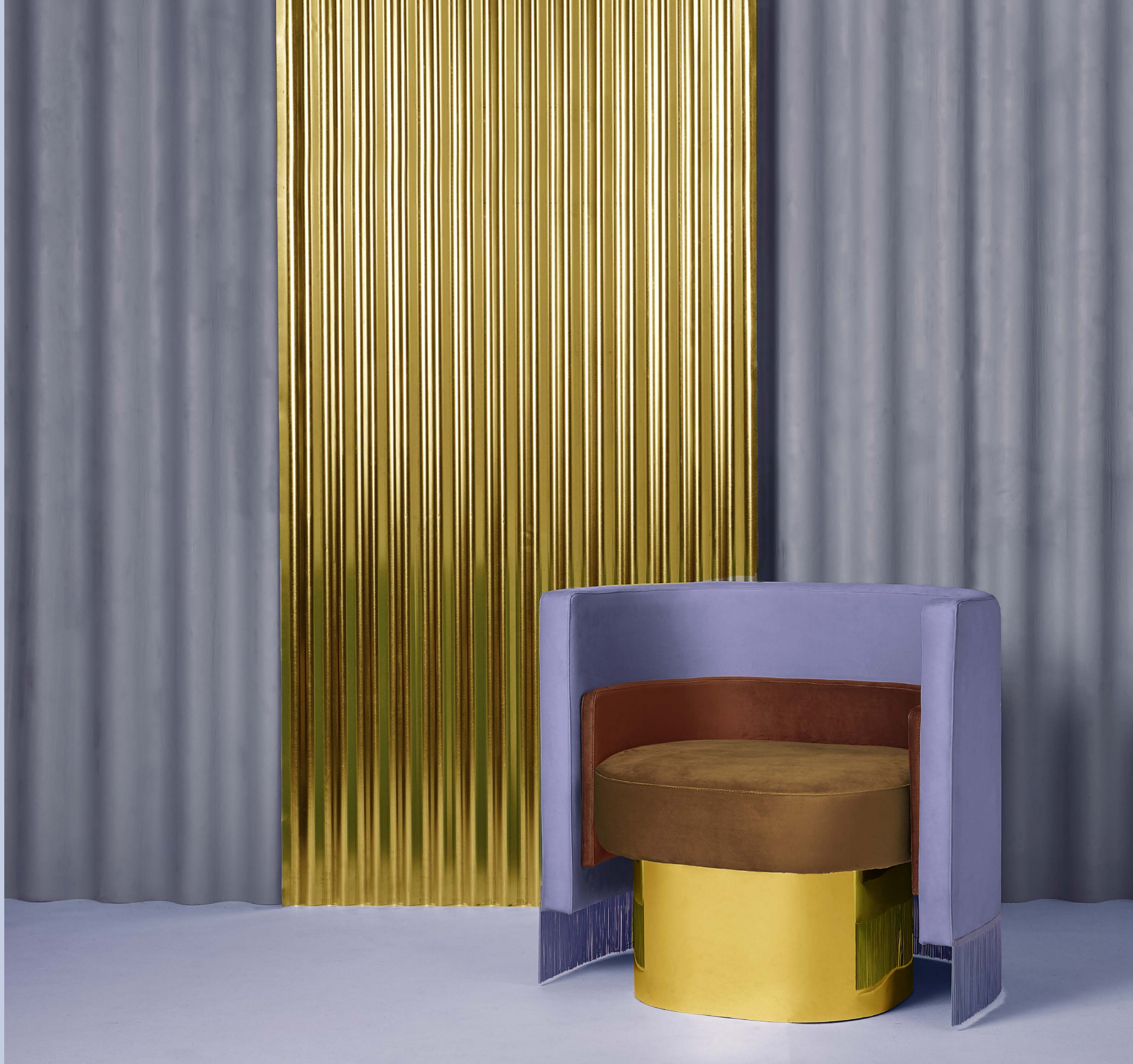




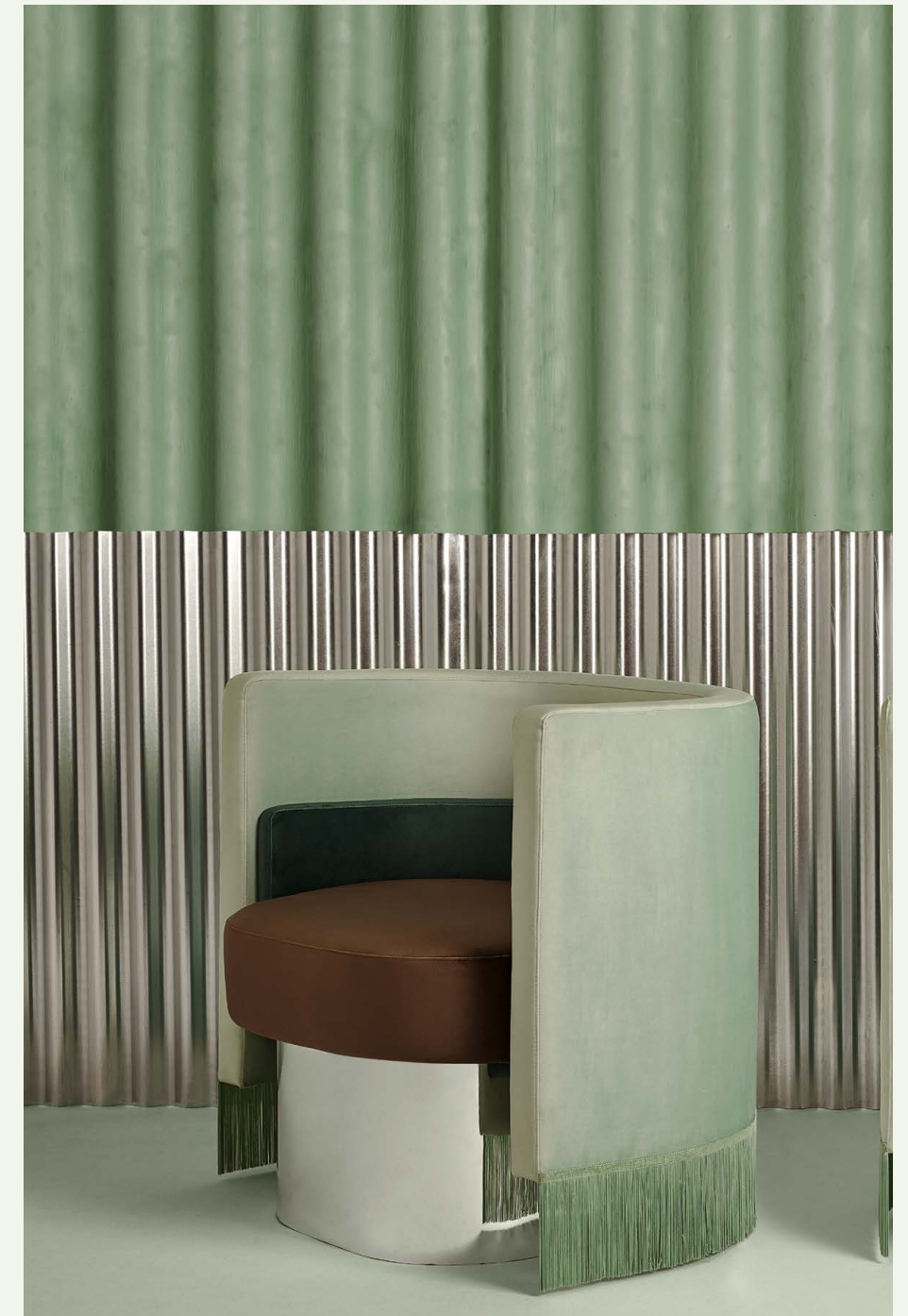
She's a Friday night's lover so while her Arco sister came out, she was hidden drinking hypnotizing and exotic cocktails. Finally, the new Arco chair have decided to introduce themselves and greet the world.







Mambo doesn't need a dance floor,
Mambo dances everywhere and
comes with new rules: you don't
have to get up to dance, now you
have to sit down. Let yourself fall
on its soft velvet and let the mambo
begin. Do you accept the dance?



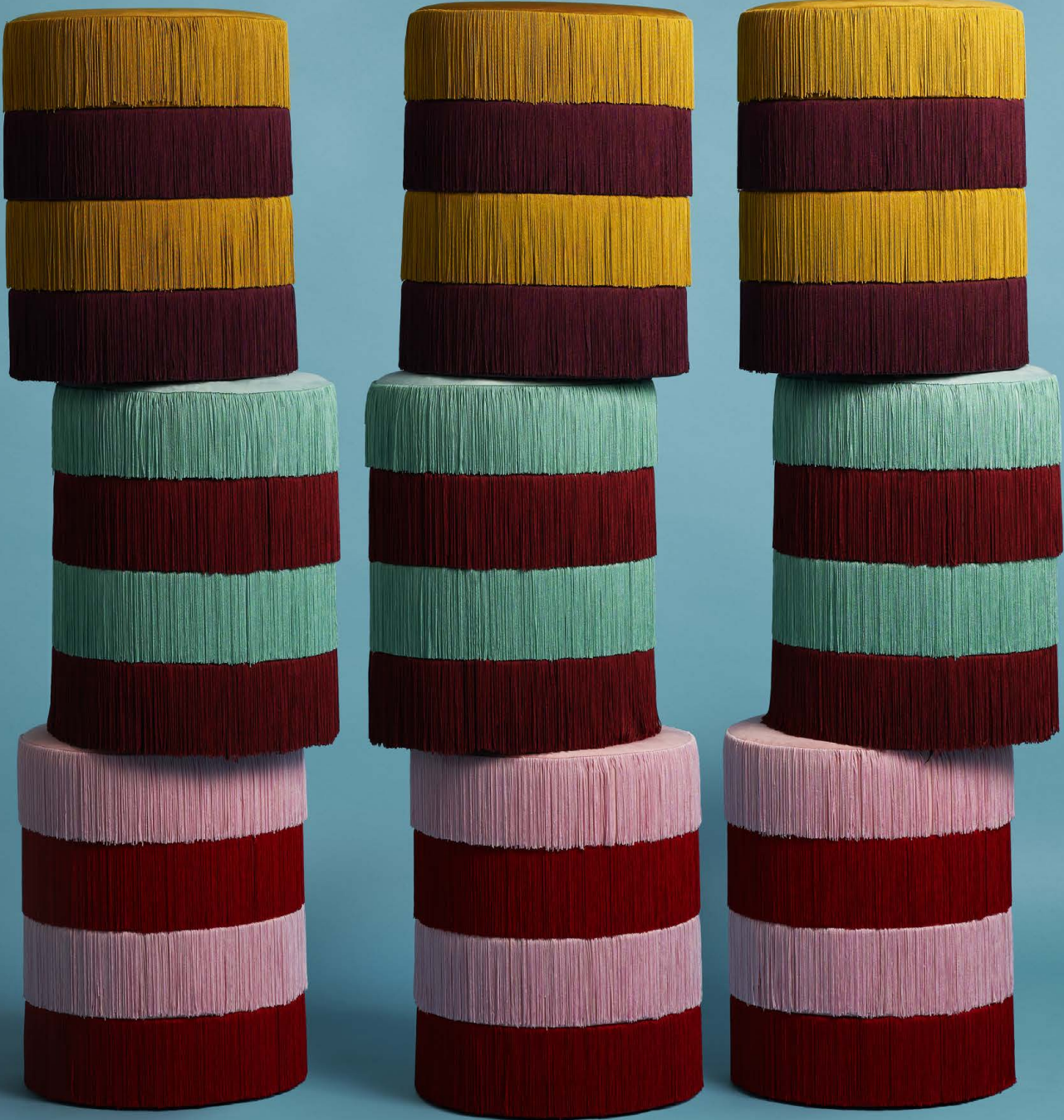




HOUTIQUE.

There's no sorrow, there's no sadness, there's no decay. Chachachá is a pouf full of life and charisma always ready to add rhythm and movement to any occasion.

With music or without it, alone or accompanied, Chachachá will always have a dance to celebrate life. 1, 2, 3 fringes in position. 1, 2, 3 chachachá.



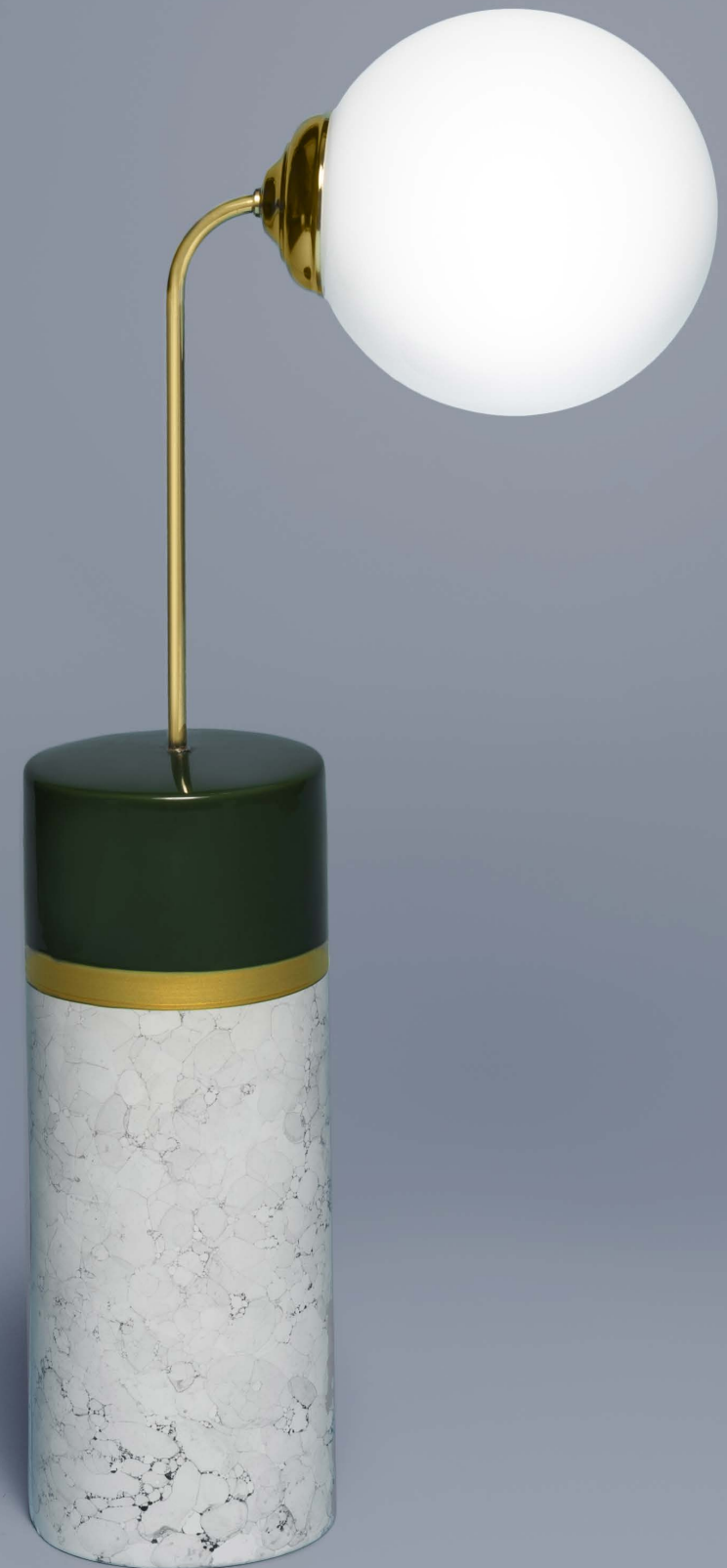
PILL POUF





A pill to cure the lack of color, delicacy, creativity and fun (its fringes will never stop moving and dancing). And, of course, healing tiredness every time you sit down to enjoy an exquisite cocktail, a spontaneous conversation or just to read your fetish book. This pill is ready to fill spaces with color and good vibes.







There's no sorrow, there's no sadness, there's no decay. Chachachá is a pouf full of life and charisma always ready to add rhythm and movement to any occasion. With music or without it, alone or accompanied, Chachachá will always have a dance to celebrate life. 1, 2, 3 fringes in position. 1, 2, 3 chachachá.



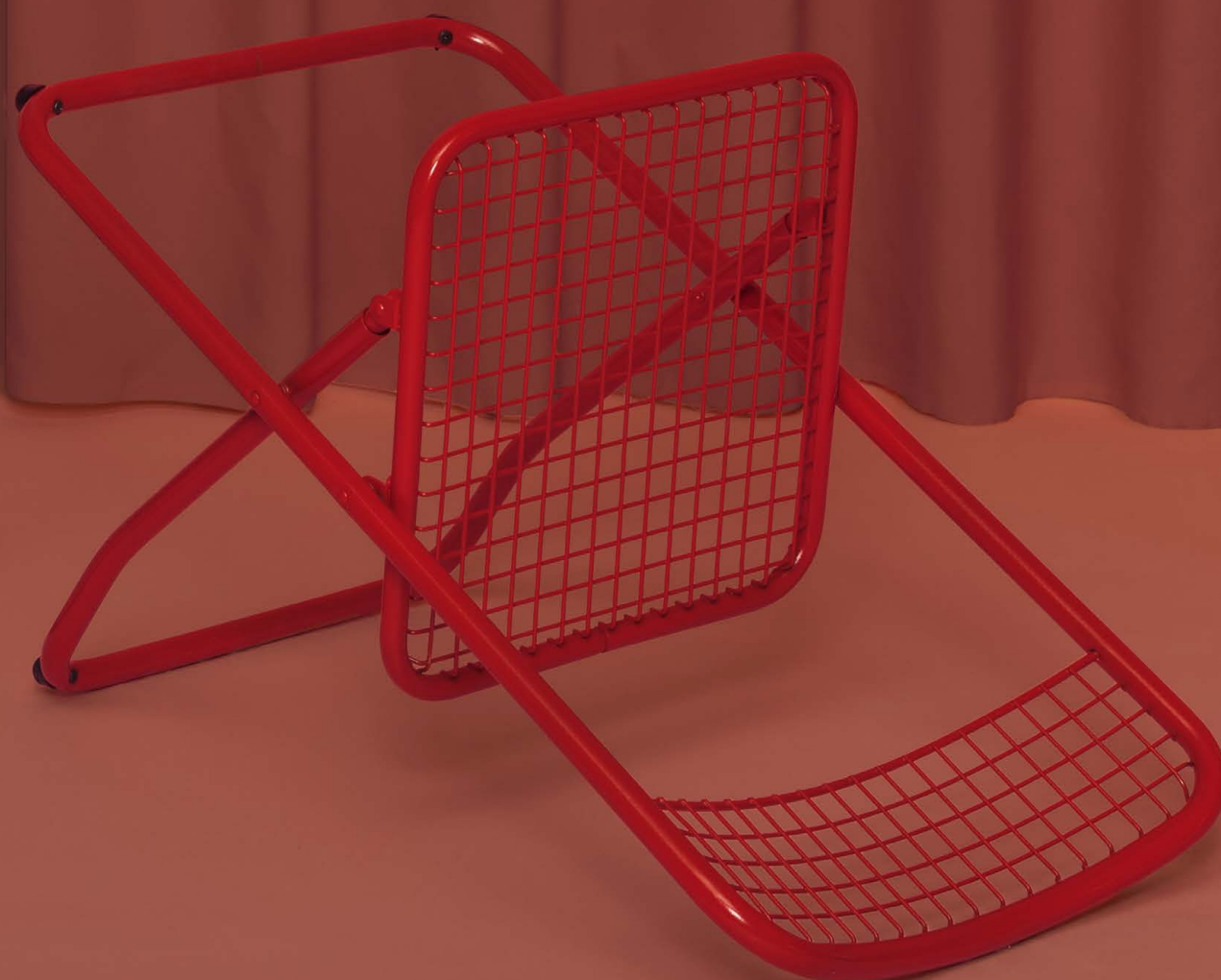
085



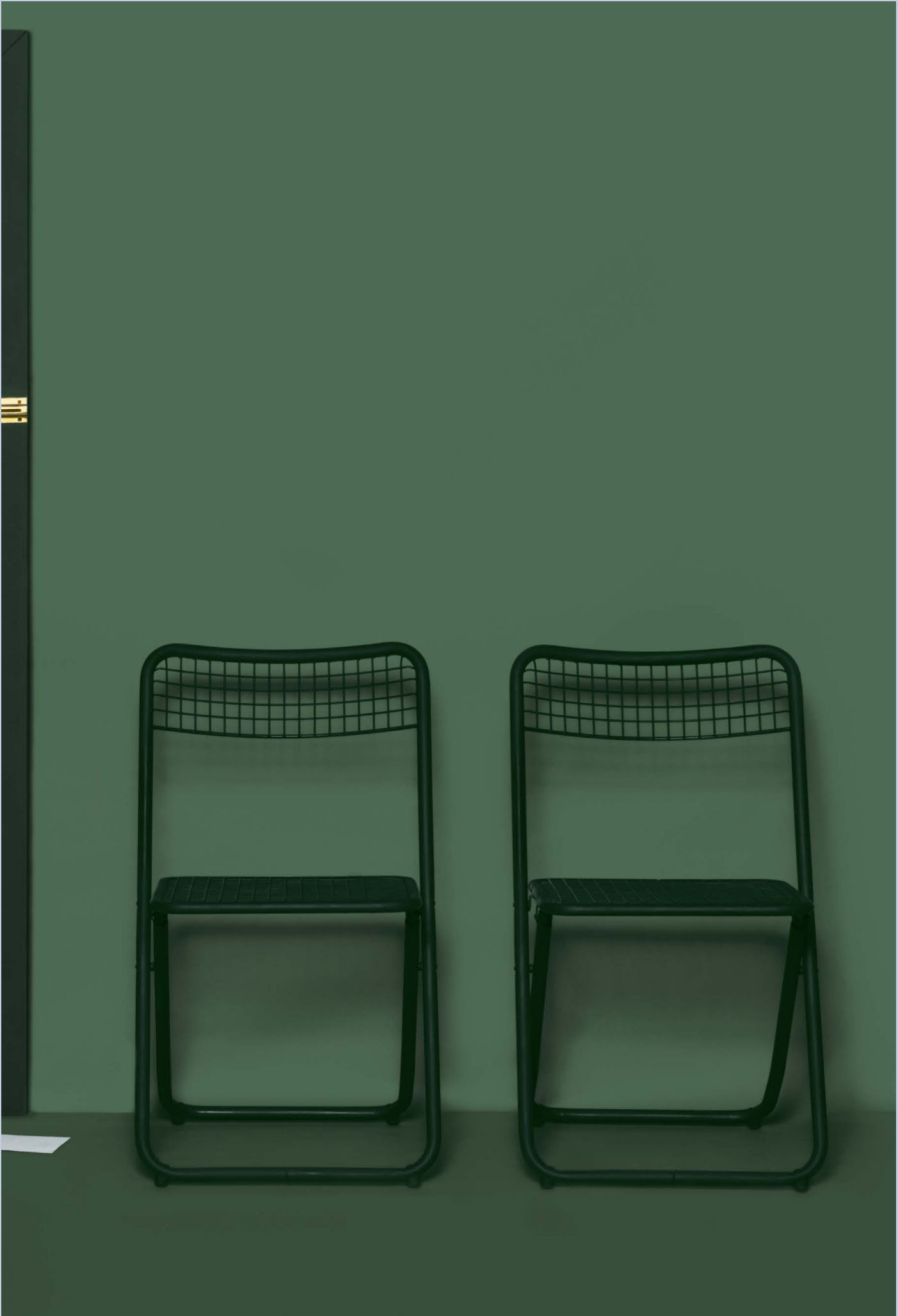
FEDERICO GINER BY HOUTIQUE



0104



0105





The Designers

MASQUESPACIO

Ana Milena Hernández Palacios
and Christophe Penasse.



Masquespacio is an award winning creative consultancy created in 2010. Combining the 2 disciplines of their founders, interior design and marketing, the Spanish design agency creates custom-made branding and interior projects through a unique approach that results in fresh and innovative concepts.

In 2019 they have been awarded 'Interior Designers of The Year' by the Spanish edition of The New York Times' T Magazine. Previously they also have been awarded with the 'Massimo Dutti New Values' award by Architectural Digest Spain and the "Wave of the Future" award by Hospitality Design USA, next to a continued international recognition by media specialized in design, fashion and lifestyle trends. They have worked on projects in several countries like Norway, USA, Germany, France and Spain.

NIKA ZUPANC



Her works bring inspiring reports from the outer frontiers of technologies, materials and possibilities.

Her product design collaborations include distinguished design companies such as Moooi, Se and Dior. Nika Zupanc creates limited edition collections for Rossana Orlandi, while continuing to design and produce her own brand. Since emerging at the Milan Design Week she has been closely watched by the industry and the press, describing her work as everything from "punk elegance" (Elle USA) and "techno chic" (BusinessWeek) to "larger than life" (Clear magazine) and Zupanc as "the real star" (The Wall Street Journal). Her visual language comes from deep within and is about "communicating the things that cannot be told."

ELENA SALMISTRARO



Product designer and artist, Elena Salmistraro lives and works in Milan. She works as a product designer and artist/illustrator for leading companies in the creative industry, including Apple, Disney, Alessi, Lavazza, Bosa, Seletti, De Castelli, Cc-Tapis, Timberland, Replay, LuisaViaRoma, Yoox, LondonArt, Lithea, Bitossi Home and others. Besides, she collaborates with prestigious Art and Design Galleries, such as Rossana Orlandi, Dilmos, Camp Design Gallery, Subalterno1 and Secondome. Her creations are the result of a combination of art and design; utmost care for details, painstaking search for the harmony of shapes and poetic style characterize her projects. One of her work's priorities is the search for the expressive language of objects, which may fascinate people by evoking emotions.

SERENA CONFALONIERI



Serena Confalonieri (1980) is an independent designer and art director based in Milano. She works on product, graphic and textile design projects and collaborates with many Italian and international companies.

Her works are placed in-between product and graphic design: an accurate research on the surfaces is always present in her projects. After a Master Degree in Interior Design, she started her career working in many architecture and design practices in Milano, Barcelona and Berlin, and collaborating with the Interior Design Faculty of Politecnico di Milano as assistant professor. In 2013 she makes her debut at Milano Design Week with her Flamingo rug, produced by Nodus.

Projects

HOUTIQUE.

COME IN AND SEE
EVERY NOOK WE ARE IN

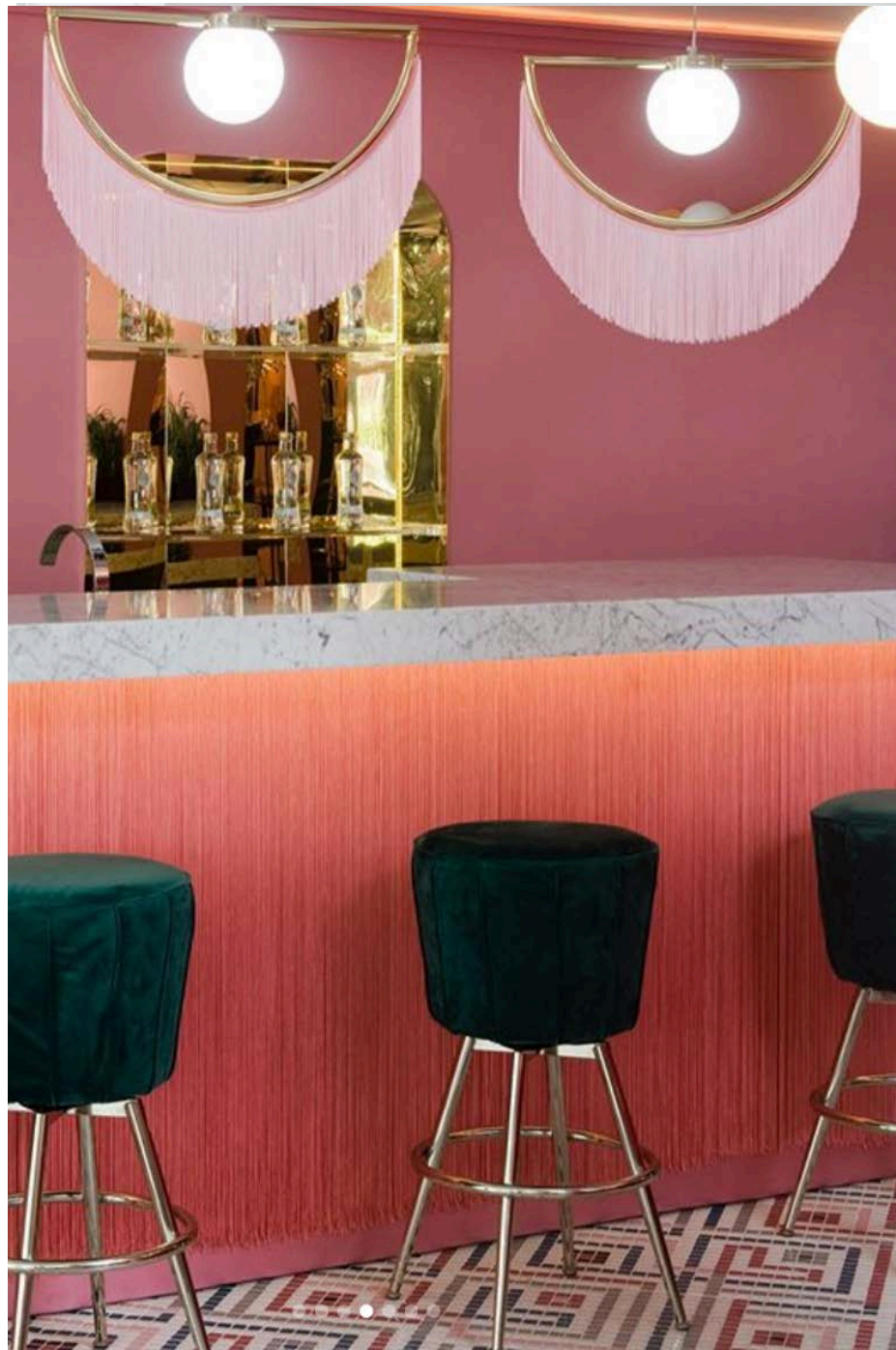
0117



Pill pouf / Wink Lamp
Casa Decor 2018
VG Living







Wink Lamp / Pill Pouf
Casacor Perú 2018

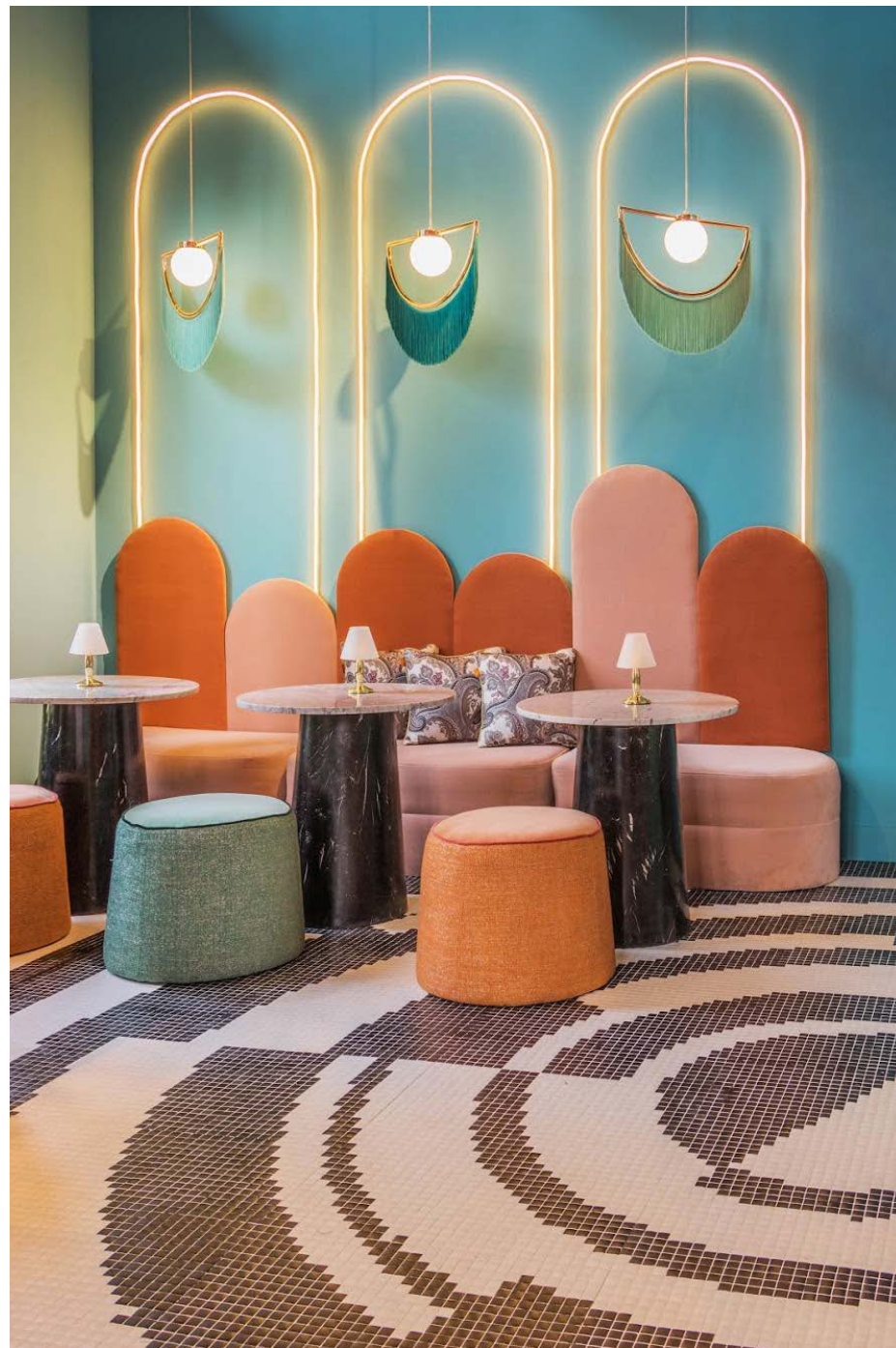




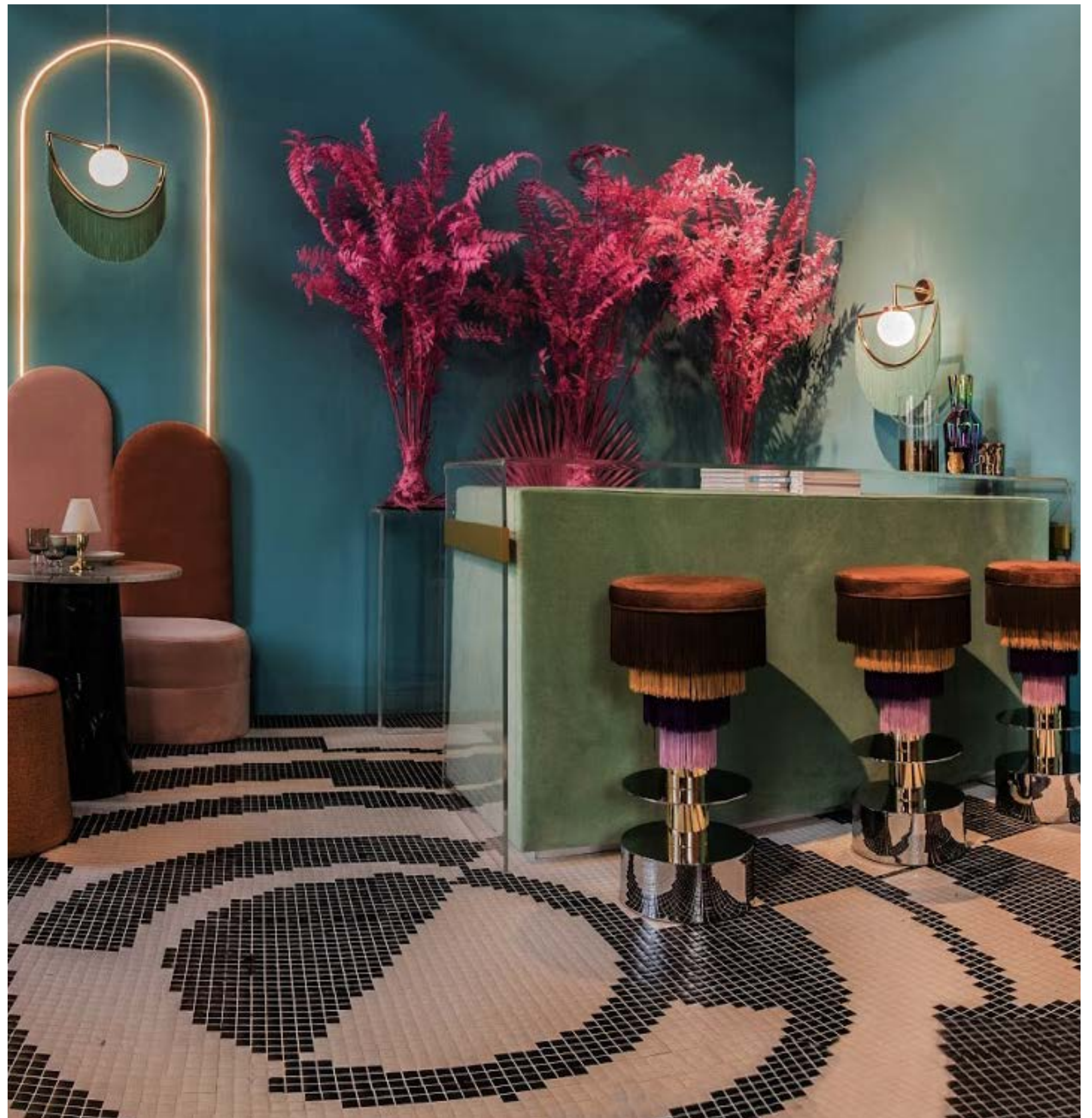
Bonnet Mirror
ELLE NL by
Dutch Design Week

Wink Lamp / Pill Puf
Expo Deco
Eliz Cuevas



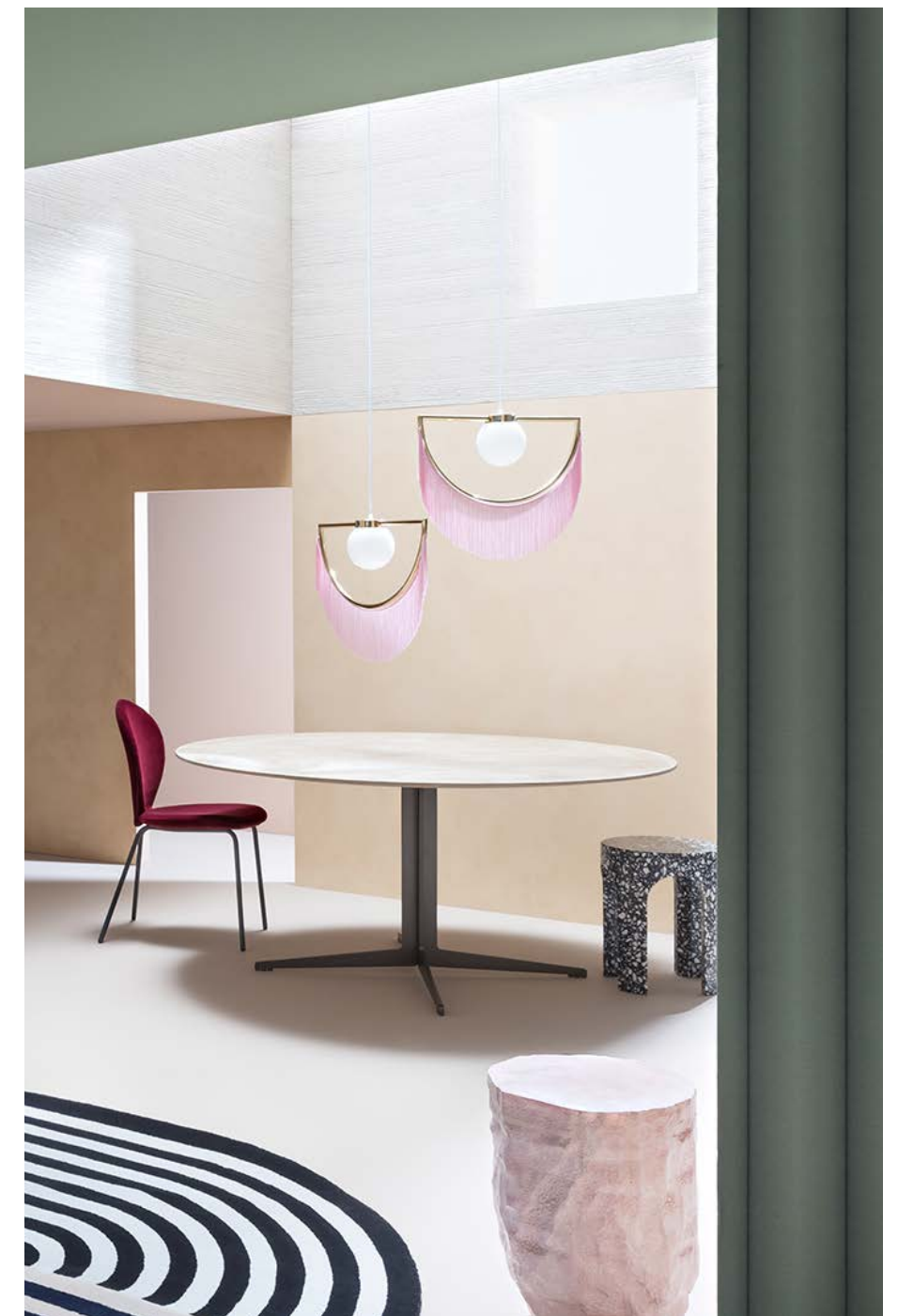


Wink Lamp / Pill Puf
Expo Deco
Eliz Cuevas

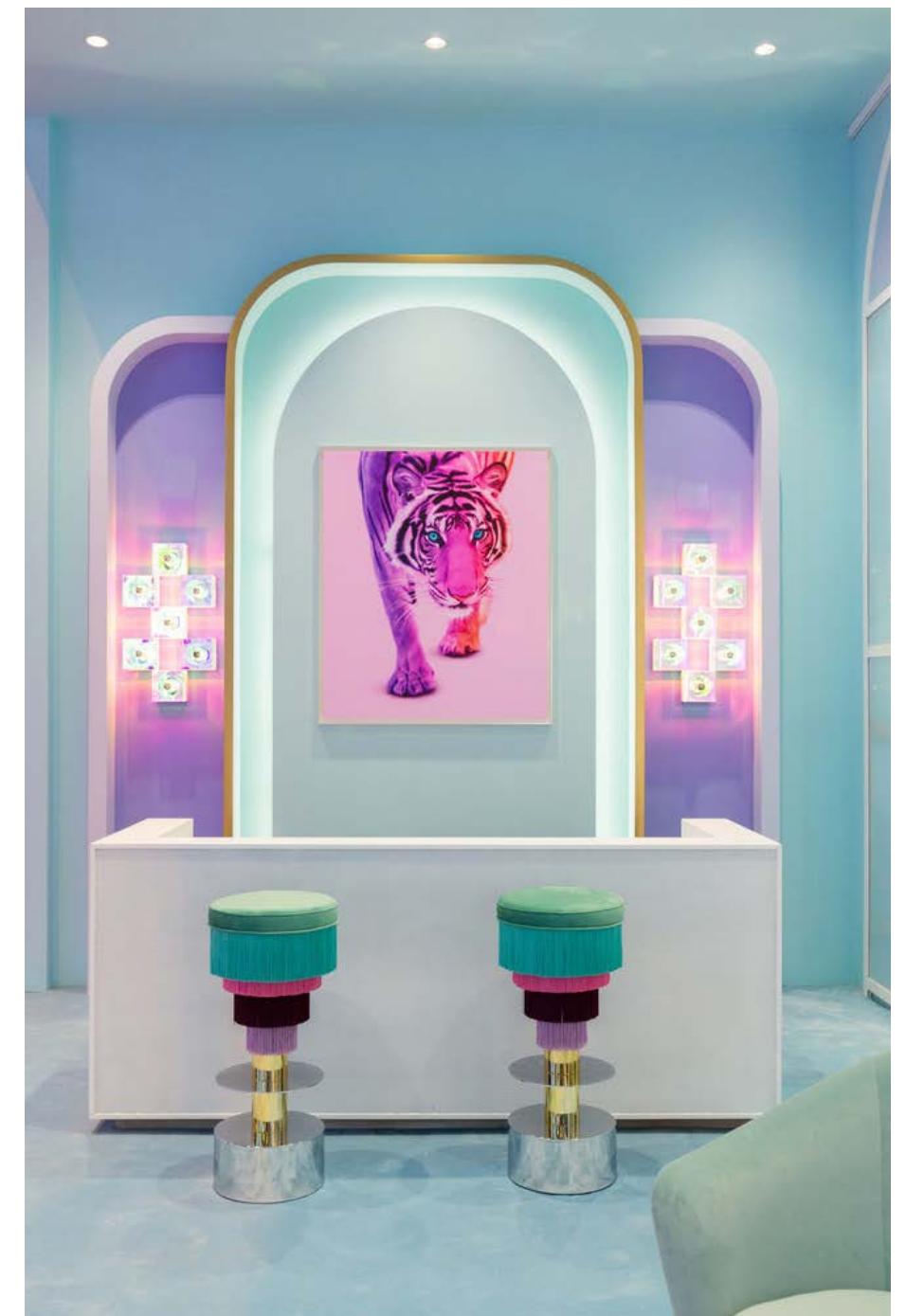




Wink Lamp
Hotel La Planque
Desjeux Delaye



Bonnet Mirrow / Wink Lamp
Corriere della sera
Living



Wink / Déjà Vu Stool
Kronos Home
Miriam Alía





Pill Pouf / Wink / Déjà Vú Stool.
AD - Tanqueray N° 10
Patricia Bustos



Materials book

HOUTIQUE.

Create your own
combination of fringes
color, velvet pantone
and structure finishes

0141



365	365	WG 1
367	489	WG 3
358	3493	CG 5
361	red032	WG 7
364	1805	WG 11
553	486	413
554	471	416
555	469	417
556	484	CG 11
5467	483	419

WG 5	320	628
CG 7	631	545
CG 1	306	5527
5425	632	5497
5215	634	5487
5195	542	5477
5185	5425	455
5205	5414	456
490	541	458
491	5395	461



342



203



11



9



33



35



16



433



34



402



533



29



75



142



18



96

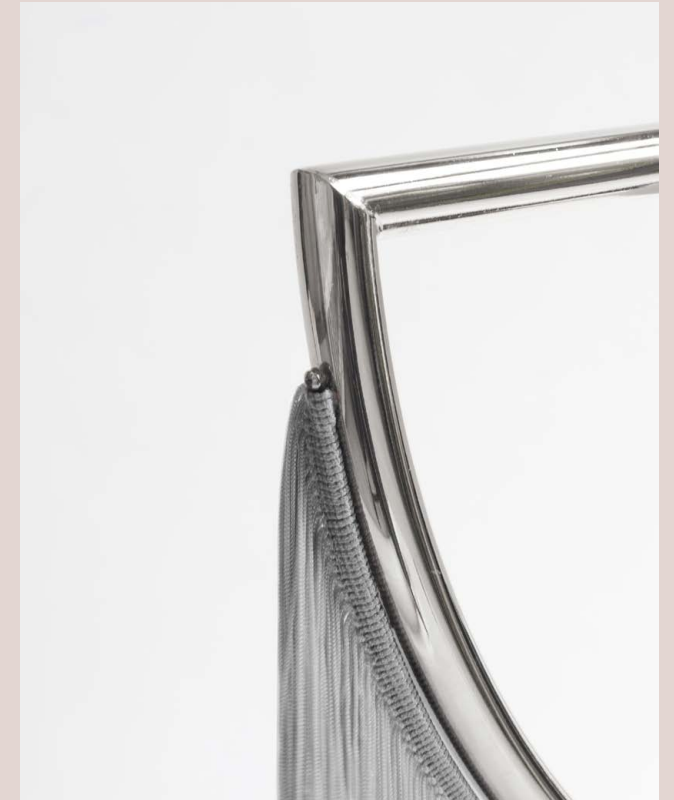


134



134

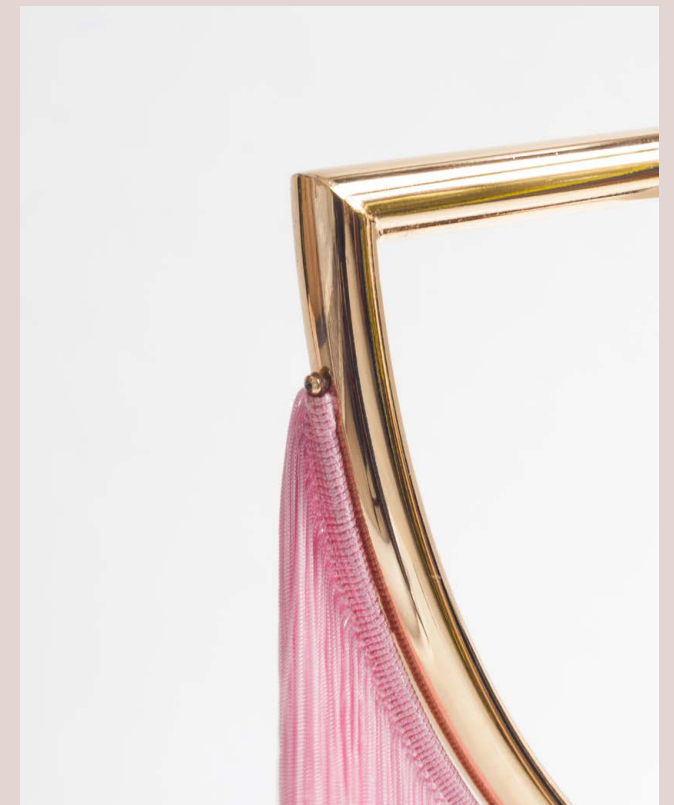
Structure finishes



Silver & softness



Graphite & elegance



Gold & delicacy

Velvet specifications:

With: 140 cm
Fabric weight: 345 g
Stain free
Fire retardant
Fabric composition: PES 100%

Care and cleaning:

Liquids or oils absorb with a cloth or absorvent paper and then rub with gentle and circular movements. Stains of grease, pen, etc. moisten the paper or cloth in water with 5% of detergent. Always let the fabric dry. To remove the dust use a vacuum clenaer with soft brush.

Washing:

Washing maxine Max. 40°C. Neutral detergents. Don't drain, twist or centrifugate. Don't use bleach. Dont let dry inside the washing machine. Avoid to dry in the sun. iron from the backing side. Max. 110^a C. revive the velvet with a soft brush. Do not dry clean.

Test

< 450 N	> 20 N
Tensile strength ISO 13934-1	Tear resistance BS 4303
> 3 daN	< 4mm
Tear resistance DIN 53859-5	Movement sewing BS 3320
< 6mm	< 7mm
Movement sewing DIN 53838	Deform. fabric NF 6 35-104
50000 cycles	< 4
Abrasion resistance ISO 12947	Resistance to pilling ISO/Dis 12945-2

WINK CHAIR

Page 03

Structure: 20 mm robust curved iron
tubebathed in 24 Carats gold.

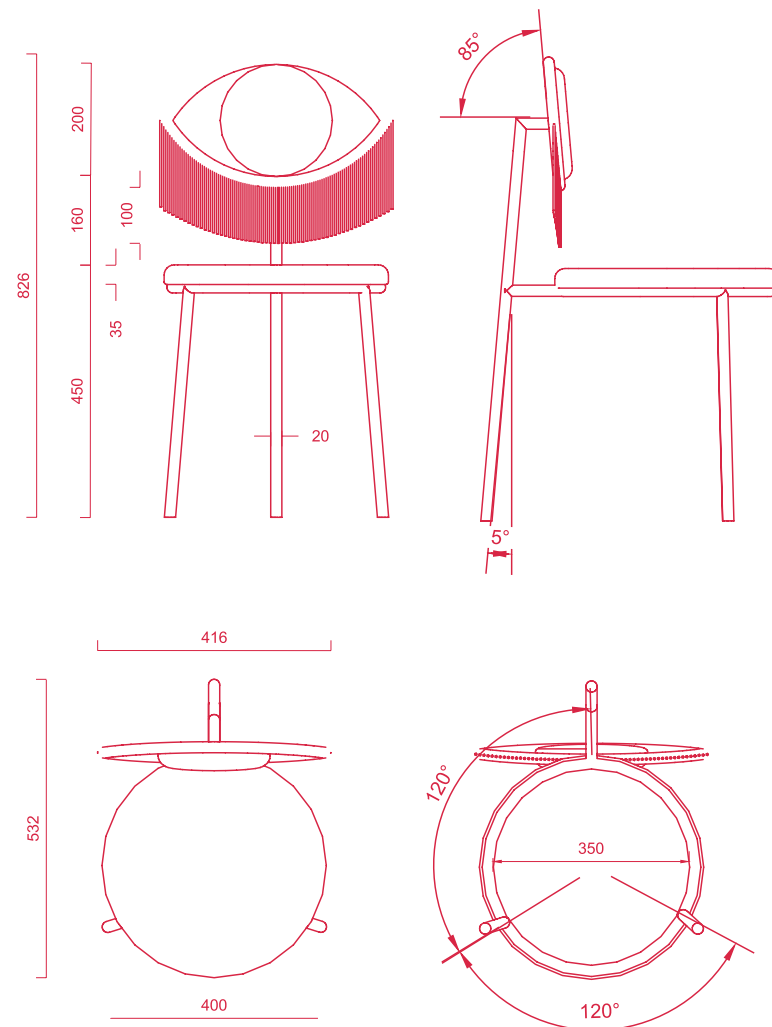
Approvals: Qualicoat License P-0504 /
GSB License 179A.

Contact welding on each rod and
subsequent sanding to avoid
any noise between rods and
protruding metals.

Seat and backrest with MDF Board
padded with HR foam of 25 Kg.
Upholstery Velvet 100% polyester
and backing with fringes . 345 gr/m.
50000 Martindale cycles.

Dimensions:
Height: 83 cm
Widht: 42 cm

Designed by Houtique.
Made in Spain.



JULIETTE CHAIR

Page 010

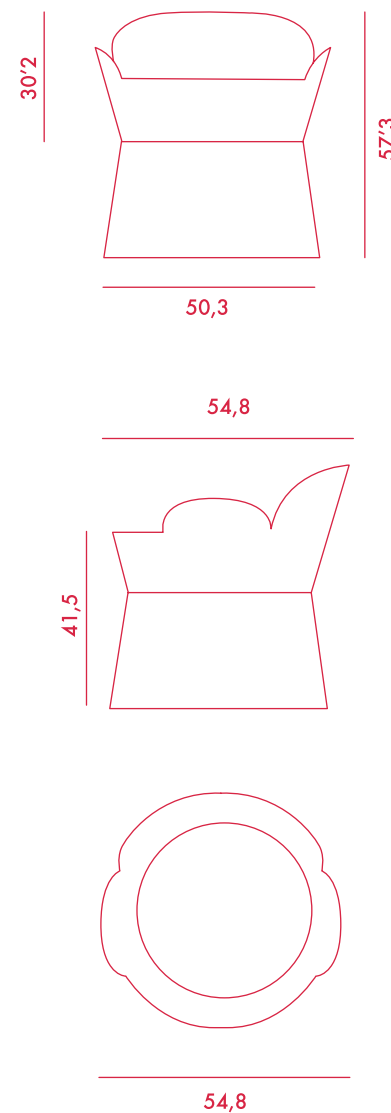
Structure: Manufactured with steel
2 mm bathed in 24 Ct gold.

Seat made of particleboard with
fire retardant 35 kg TEAD rubber.

Velvet: 100% polyester with
backing. 345 gr / m²
50000 Martindale cycles.

Dimensions:
Height: 57 cm
Widht: 55 cm

Designed by Nika Zupanc.
Made in Spain.
For indoor use only.



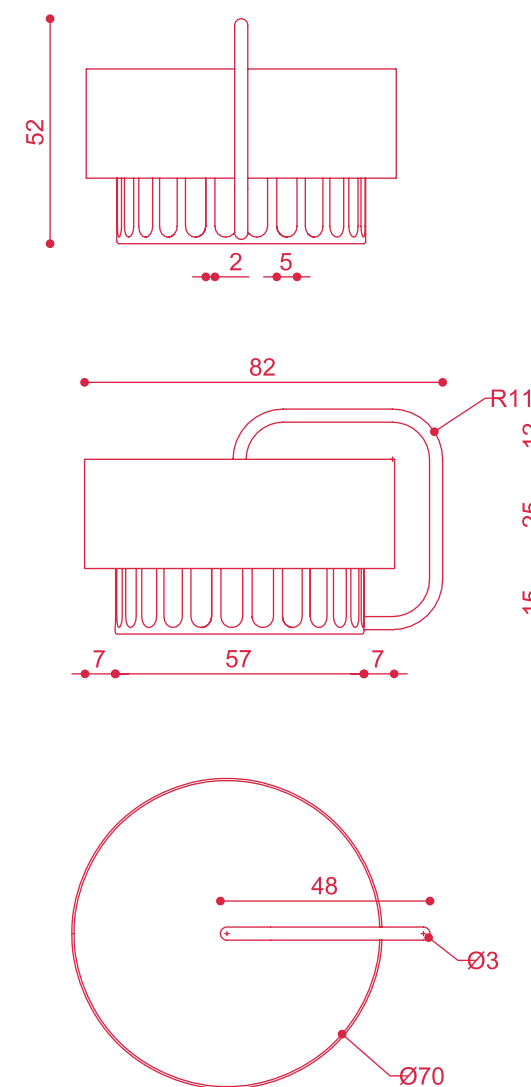
CHICCERA SIDE TABLE

Page 017

Structure: Manufactured
with decorated steel
2 mm and 24 Ct gold plated.

Dimensions:
Ø 82 cm
Height: 52 cm

Designed by Elena Salmistraro.
Made in Spain.
For indoor use only.



TROPICANA LAMP

Page 023

Ceiling lamp with wood and caneworks
screens structure, decorated metal and glass
tulip. Color textile security cable 1.5m

10W Bulb E27 included

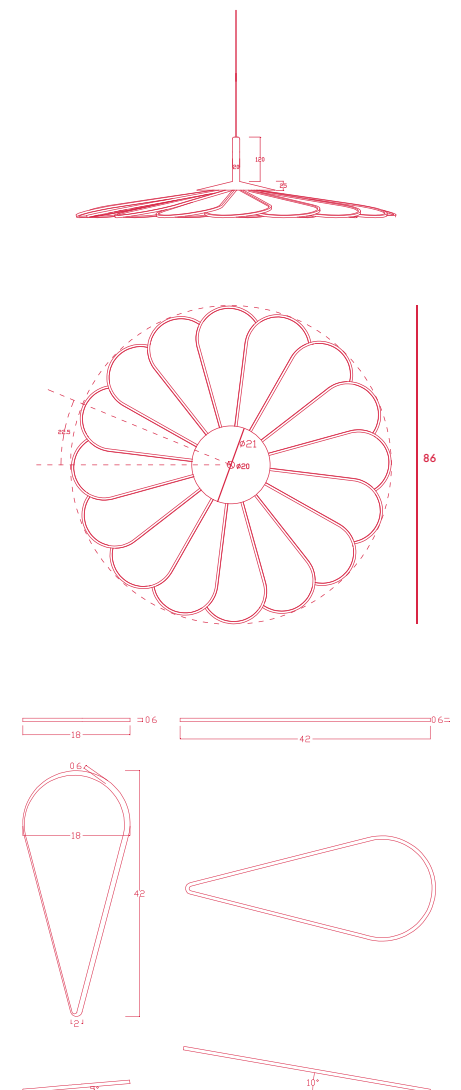
Warm Light 3200°K - Led light technology.

24 Carats gold and glass tulip.

CE In compliance with EN60598-1 and
EN60598-2-4 and with current low Voltage
Directive 2006/95/EC.

Dimensions:
Ø 90 cm
Height: 200 cm

Designed by Serena Confalonieri.
Made in Spain.
For indoor use only.



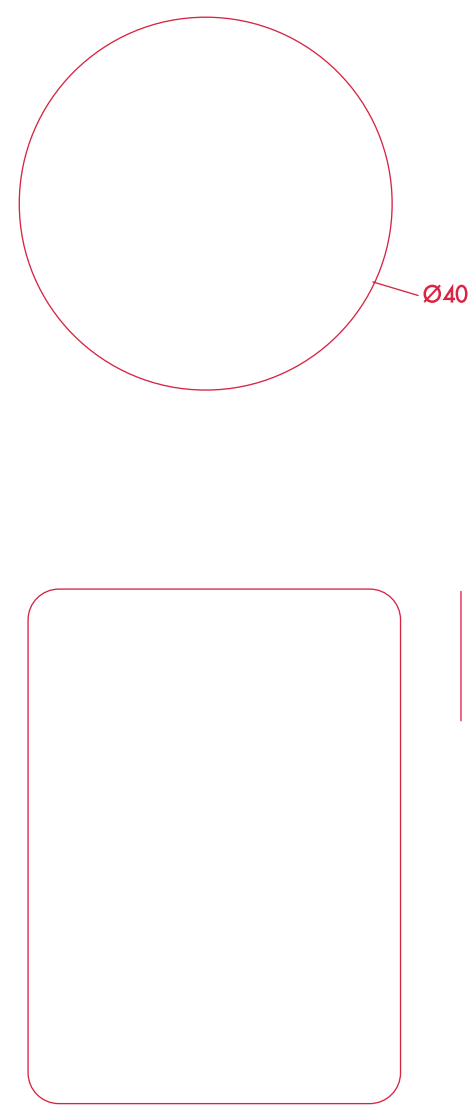
WOODY POUF

Page 028

Pouf with wood structure and
100% cotton fabric
Upholstery Velvet 100%
polyester with backing. 345 gr/m.
50000 Martindale cycles.
TEAD foam with fibre-covered.

Dimensions:
Height: 45 Cm
Diameter: 40 Cm

Designed by Houtique.
Made in Spain.



POMPA POUF

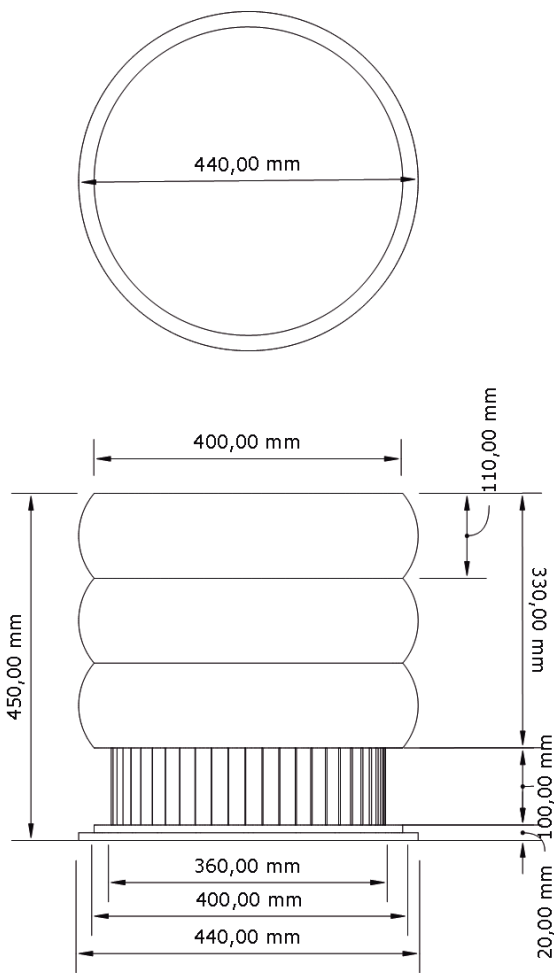
Page 035

Pouf with wood structure and velvet fabric
4 modules connected by wooden sleepers,
each one Formed by 2 fiber-board discs of 16
mm, joined by wooden tufts.

Upholstery Velvet 100% polyester with
backing. 345 gr/m. 50000 Martindale cycles.
TEAD foam with fibre-covered.

Dimensions:
Height: 45 Cm
Diameter: 44 Cm

Designed by Houtique.
Made in Spain.

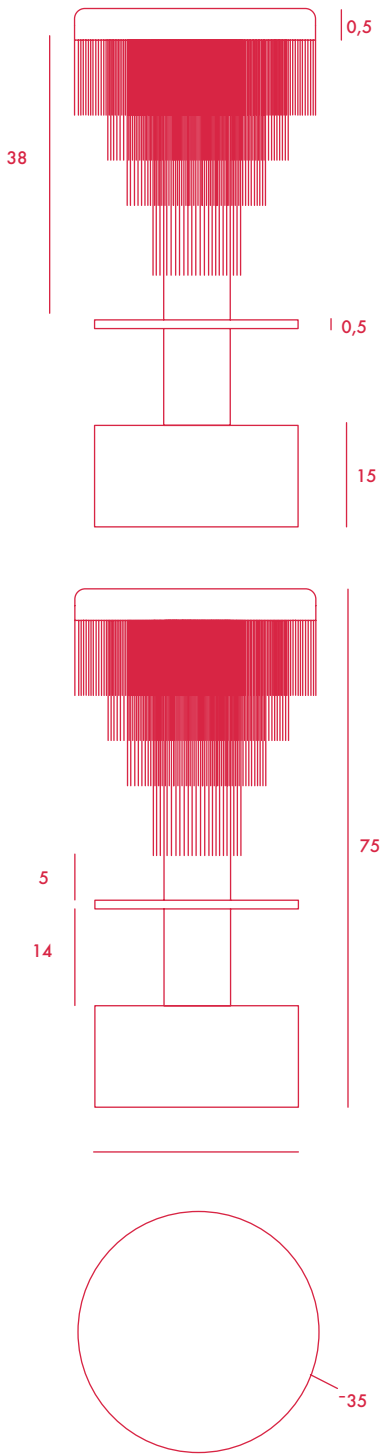


DÉJÀ VU STOOL

Page 040

Seat made of particleboard with fire
retardant 35 kg TEAD rubber.
Velvet: 100% polyester with backing.
345 gr / m . 50000 Martindale cycles.
Circular Base and Metallic footrest
covered in Chrome.
24 K gold-plated metal center tube.
14575

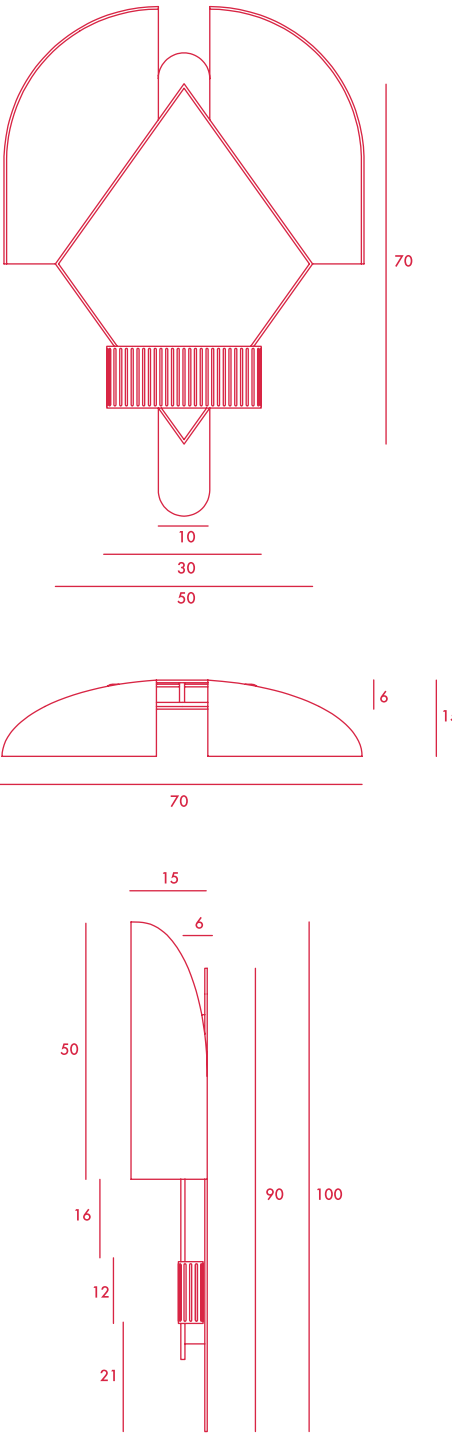
Designed by Masquespacio.
Made in Spain.



BONNET MIRROW

Page 047

Mirror made of minerals and
high strength resin.
Bevelled mirror.
24 K copper / Gold metallic back piece /
black color powder coated (paint)
According to model



JIMI SOFA

Page 051

Three-seat sofa

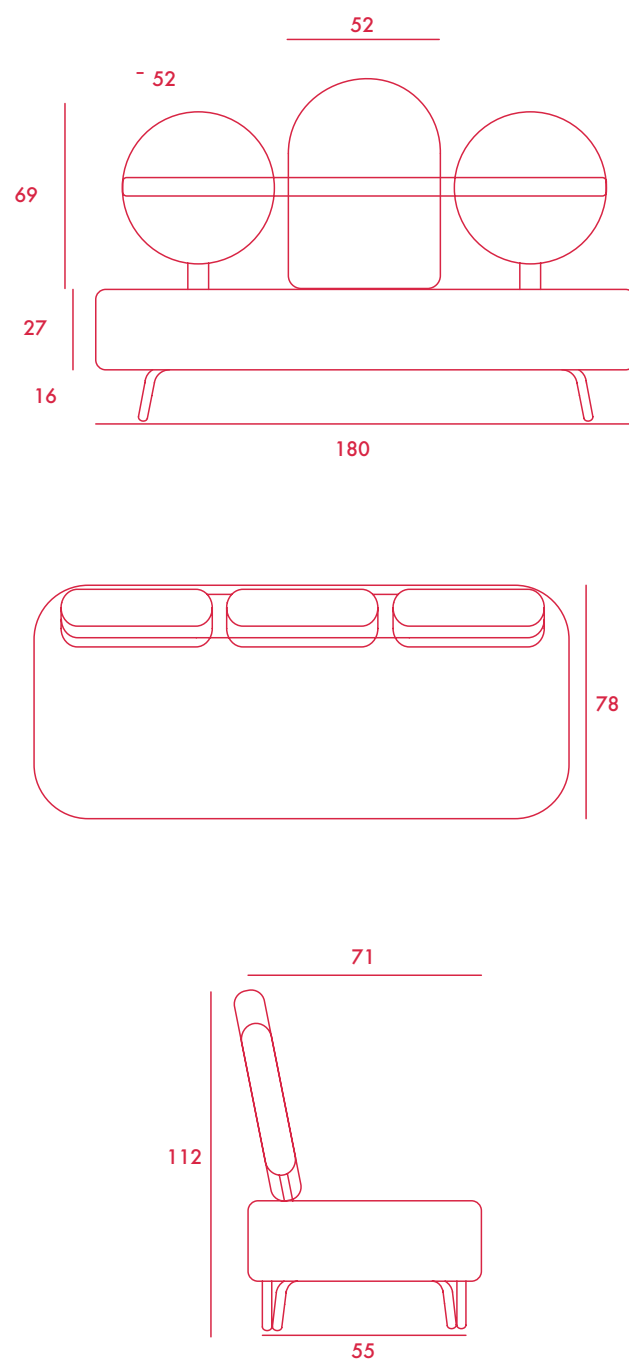
Velvet: 100% polyester with backing.
345 gr / m .50000 Martindale cycles.

40 kg fireproof rubber.

Pinewood carcass.

Metal structure with painted
with Powder Coated.

Designed by Elena Salmistraro.
Made in Spain.



WINK CEILING LAMP

Page 059

Ceiling lamp post-modernist style with metal
structure and glass tulip.

Transparent security cable 1.5m

Detachable fringes.

Bulb E27 included - Led light technology.

Flame retardant treated fringes.

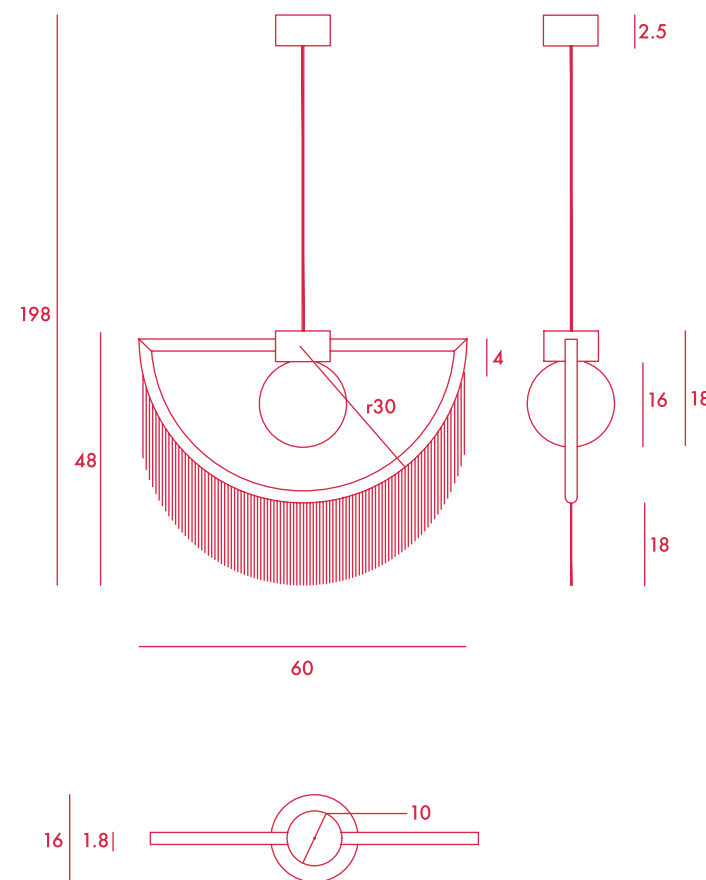
CE In compliance with EN60598-1 and

EN60598-2-4 and with current

low Voltage Directives 2006/95/EC.

24 Carats gold and glass tulip.

Designed by Masquespacio.
Made in Spain.
For indoor use only.



WINK STANDING LAMP

Page 064

Post-modernist style with metal
structure and glass tulip.

Detachable fringes for easy washing (by hand).

Cable of 2 m. with foot switch

2 directability Winks horizontally.

Bulb E14 included - Led light technology.

Flame retardant treated fringes.

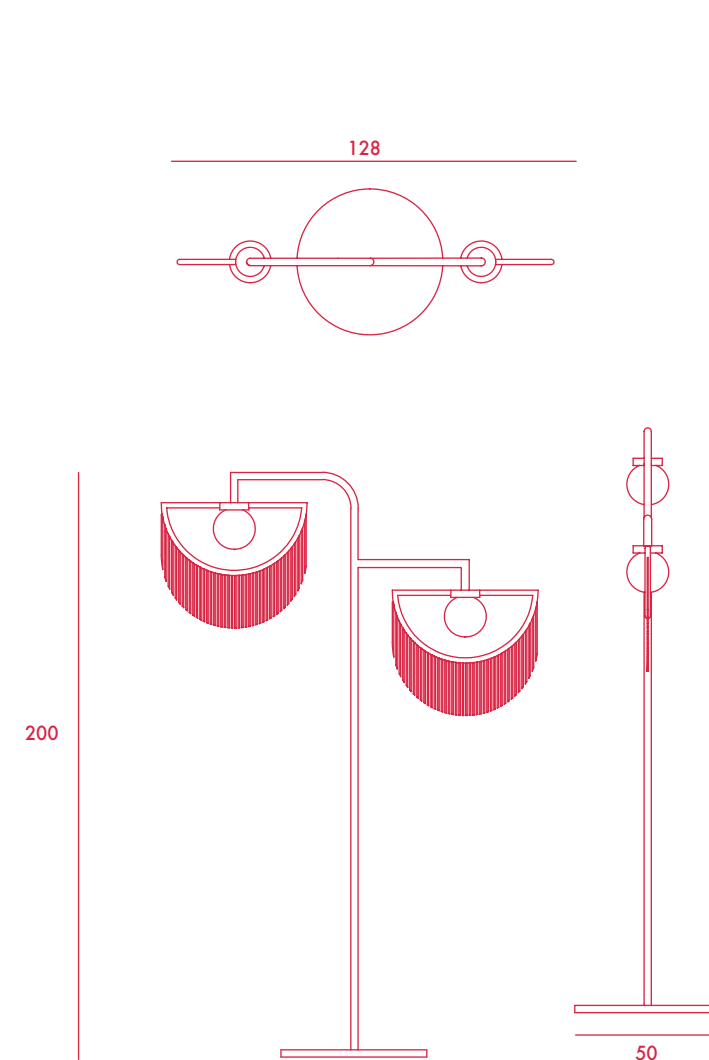
CE In compliance with EN60598-1 and

EN60598-2-4 and with current

low Voltage Directives 2006/95/EC.

24 Carats gold and glass tulip.

Designed by Masquespacio.
Made in Spain.
For indoor use only.



WINK WALL LAMP

Page 069

Post-modernist style with metal
structure and glass tulip.

Detachable fringes for easy washing (by hand).

Bulb E14 included - Led light technology.

Flame retardant treated fringes.

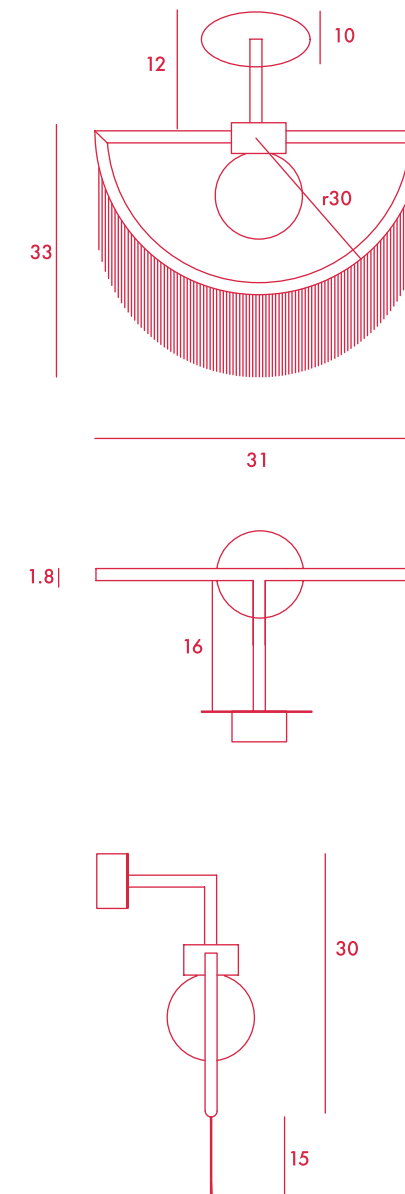
CE In compliance with EN60598-1 and

EN60598-2-4 and with current

low Voltage Directives 2006/95/EC.

24 Carats gold and glass tulip.

Designed by Masquespacio.
Made in Spain.
For indoor use only.



ARCO CHAIR

Page 073

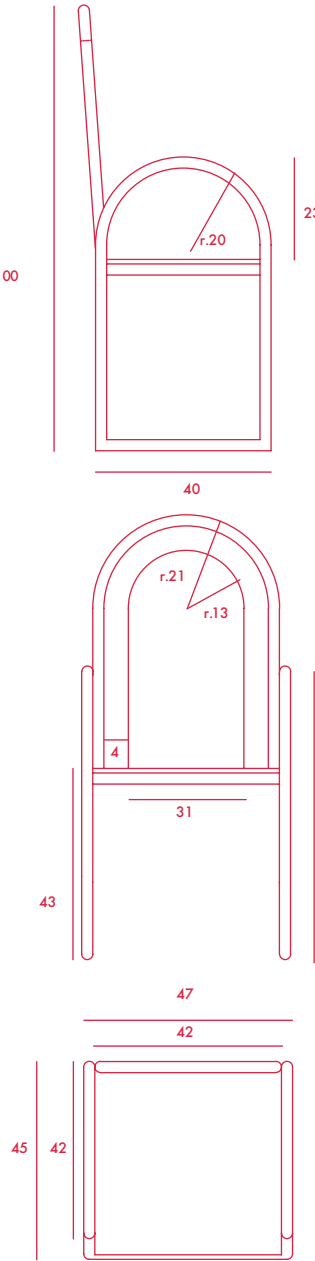
Structure: 25mm robust curved iron tube bathed in 24 Carats gold // epoxy paint (marking to model). Non-flamable paint.

Approvals: Qualicoat License P-0504 / GSB License 179A. Contact welding on each rod and subsequent sanding to avoid any noise between rods and protruding metals.

Seat and backrest with MDF Board padded with HR foam of 25 Kg.

Upholstery Velvet 100% polyester with backing. 345 gr/m. 50000 Mar-tindale cycles.

Designed by Houtique.
Made in Spain.



MAMBO

ARMCHAIR

Page 079

Metal Base bathed in 24 carats gold or bright chrome (marking to model). Solid Pinewood and fiber frame.

Laminated board seat.

Beech Wood board backrest with high frequency curved.

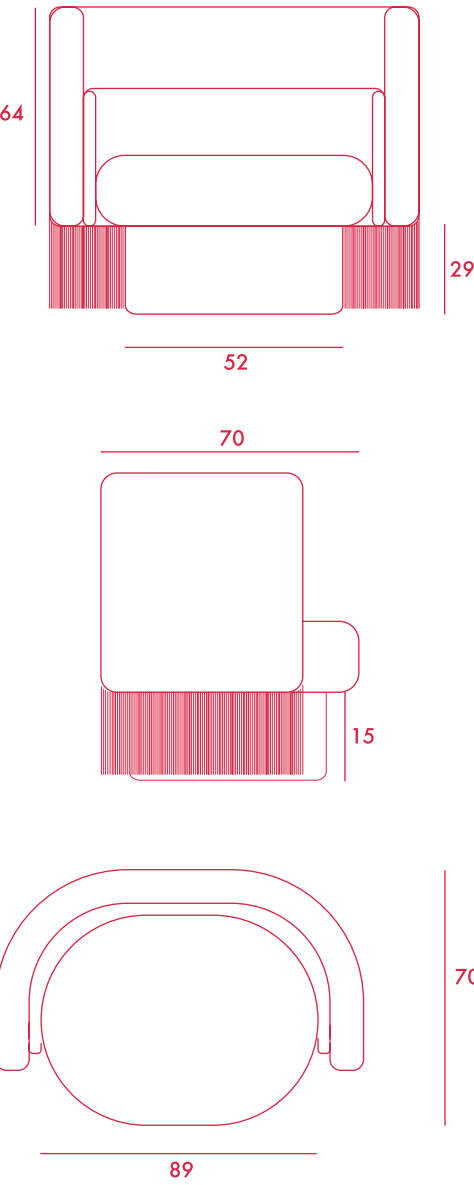
Wadding coating of 150 g/m

External and internal structure covered with hard foam of 20 kg

Velvet: 100% polyester with backing. 345 gr/m. 50000 Martindale cycles.

Bottom part with fringe of 17 cm.

Designed by Masquespacio.
Made in Spain.



POUF

CHACHACHÁ

Page 085

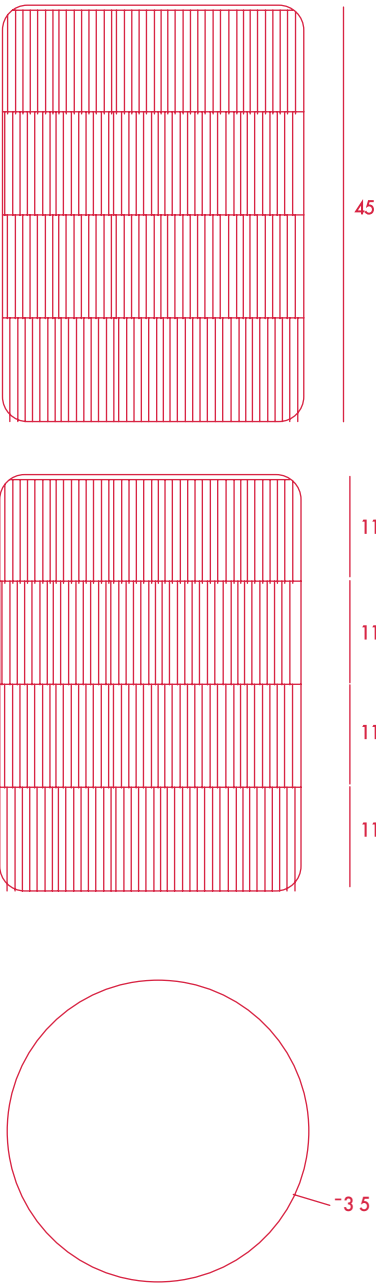
Art-deco style pouf with wood structure and velvet fabric.

4 modules connected by wooden sleepers, each one Formed by 2 fiber-board discs of 16mm, joined by wooden tufts.

Upholstery Velvet 100% polyester with backing. 345 gr/m. 50000 Martindale cycles.

TEAD foam with fibre-covered.

Designed by Houtique.
Made in Spain.



PILL POUF S

Page 091

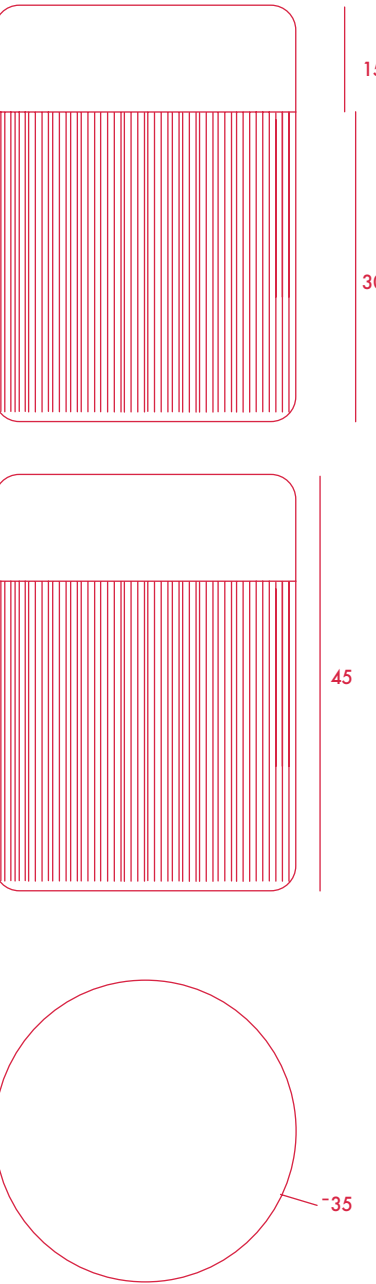
Art-deco style pouf with wood structure and velvet fabric.

2 fiber-board discs of 16mm, joined by wooden tufts.

Upholstery Velvet 100% polyester with backing. 345 gr/m. 50000 Martindale cycles.

TEAD foam with fibre-covered.

Designed by Houtique.
Made in Spain.

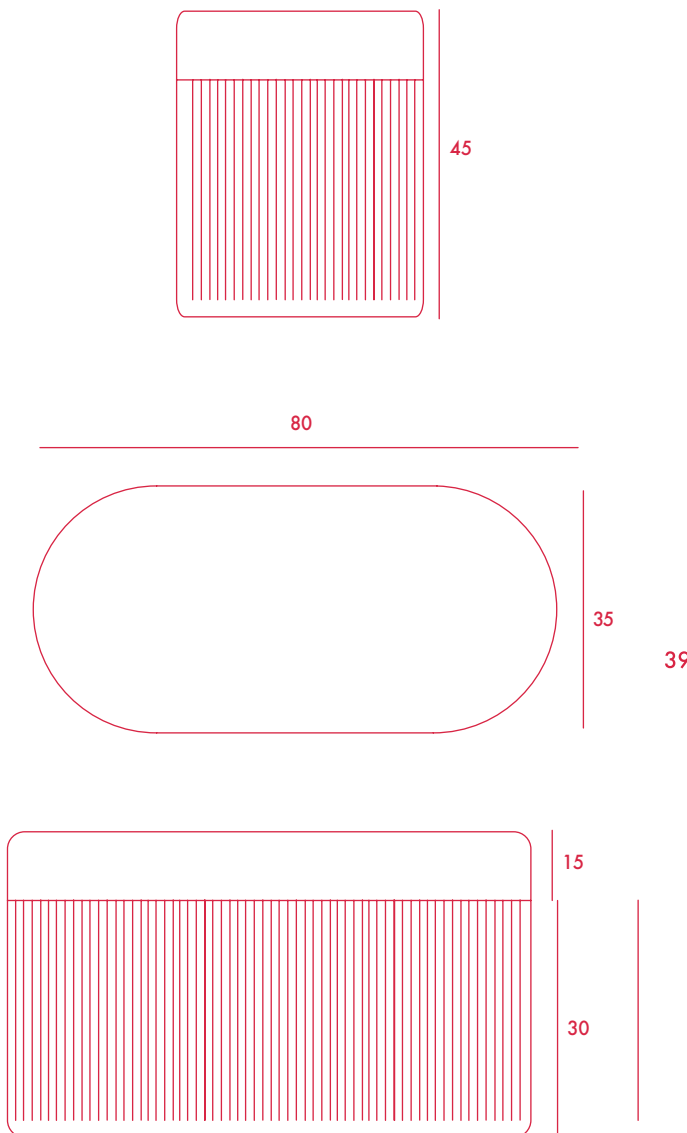


PILL POUF L

Page 091

Art-deco style pouf with wood structure and velvet fabric.
2 fiber-board discs of 16mm, joined by wooden tufts.
Upholstery Velvet 100% polyester with backing. 345 gr/m.50000 Martindale cycles. TEAD foam with fibre-covered.

Designed by Houtique.
Made in Spain.



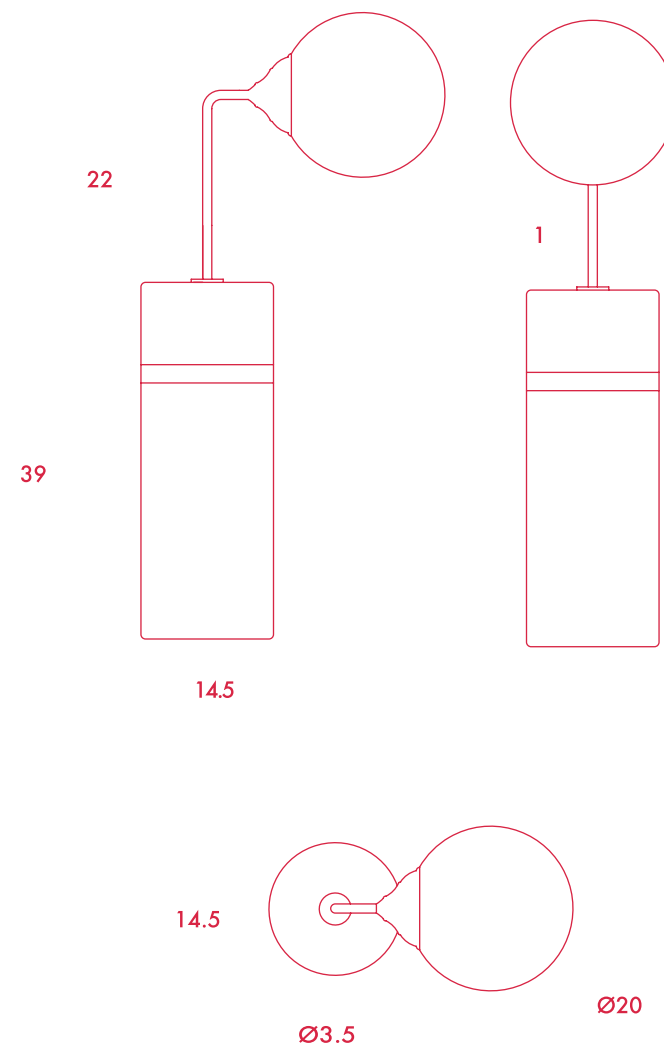
AVALON ROUND LAMP

Page 097

Structure: Ceramic structure, marble effect painted by glazing technique, top green colored glaze, gold stripe cold painted by hand.
Tube: Metallic tube, dorée finished.
Screen: Opaque cristal sferic screen with a dorée metallic lamp holder.

Approvals: CE 1272/2008, CE VBC 32 Glaxe SCFE25 PN, CEVTR102 Glaze Wetm Pott pp25kg.

Designed by Houtique.
Made in Spain.



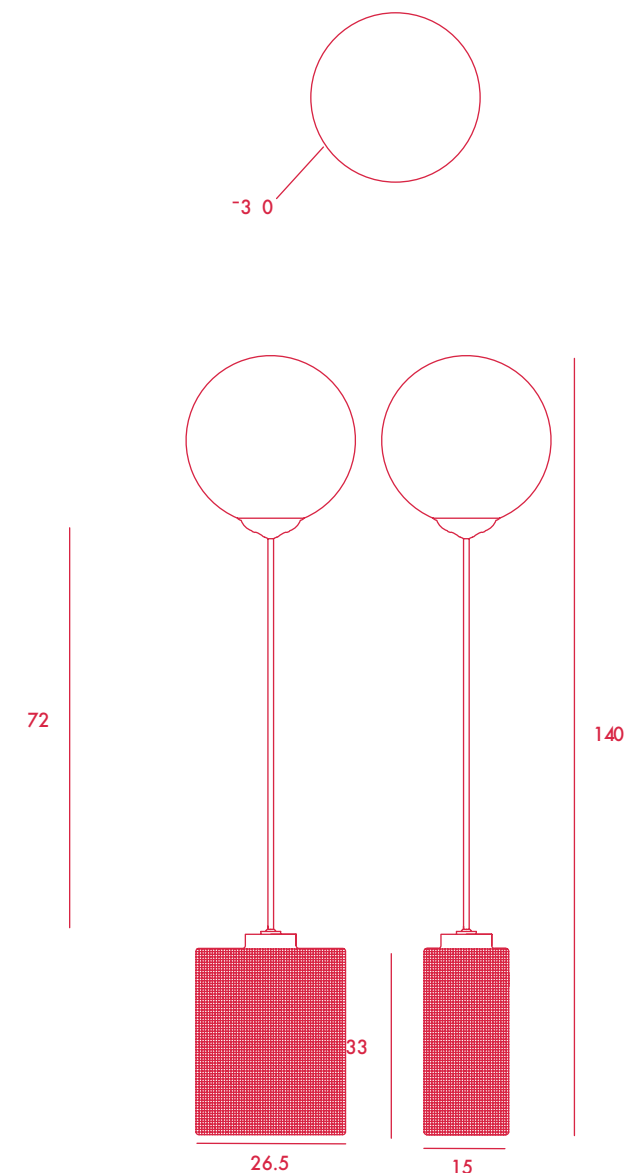
AVALON SQUARED LAMP

Page 097

Structure: Ceramic structure, colored glaze finish.
Tube: Metallic tube, dorée finished.
Screen: Opaque cristal sferic screen with a dorée finished metallic lamp holder.

Approvals: CE 1272/2008, CE VBC 32 Glaxe SCFE25 PN, CEVTR102 Glaze Wetm Pott pp25kg.

Designed by Houtique.
Made in Spain.

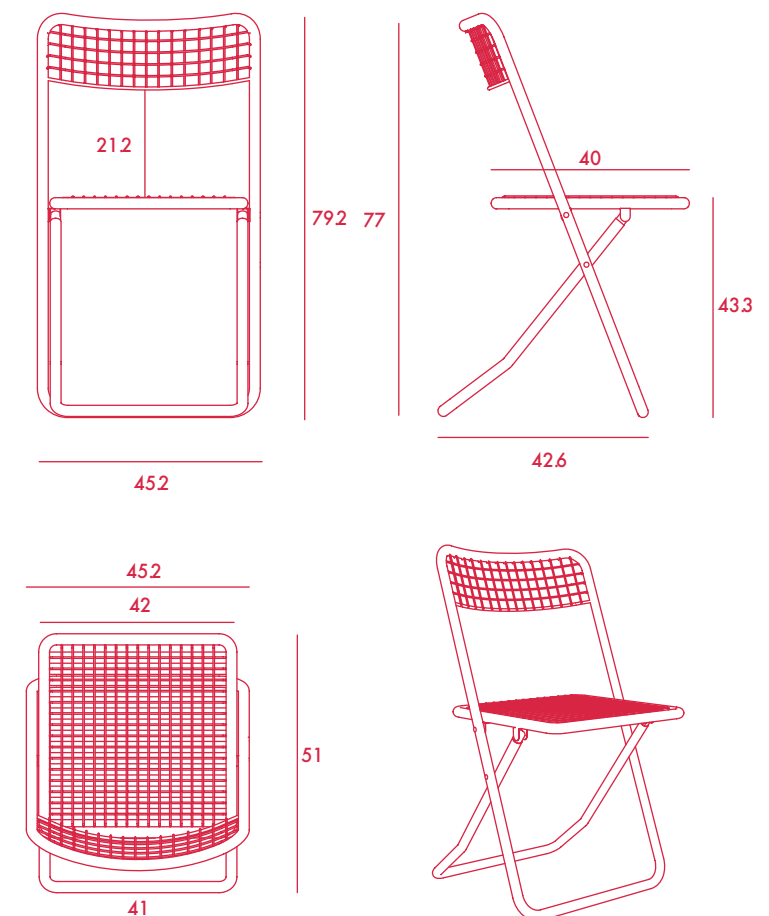


085 CHAIR

Page 079

Robust and light.
Manufactured with steel tube profile 22 mm in diameter and 1 mm thick.
Backrest with ergonomic curvature that gives it greater comfort.
High strength blocks manufactured exclusively to the geometry of the chassis of the 085 that prevent side rolls and landslides.
Foldable by galvanized telescopic system that gives greater rigidity to the chair.
Contact welding on each rod and subsequent sanding to avoid any noise between rods and protruding metals.
Base polyester epoxy paint + polyester protection topcoat CE In compliance with EN60598-1 and EN60598-2-4 and with currentlow Voltage Dierctives 2006/95/EC.

Designed and produced by Federico Giner.
Made in Spain.
For indoor and outdoor use.



WARRANTY:

All of our products are original designs.
We only use high quality raw materials.
All components follow international safety standards. 2 years warranty in production failures.

USE SPECTS:

Do not use disolvents for cleanning, only use soft and dry cloth. Before any operation on the fixture, please disconnect the power supplied. The device may not be disposed of with household rubbish. In case of emergency, please contact HOUTIQUE.

HOUTIQUE.

LEGAL TERMS:

ENGLISH

1. WHEREAS

These Terms and Conditions of Sales govern transactions between HOUTIQUE and its customers/clients (BUYERS). HOUTIQUE specifically rejects any Terms or Conditions of Sale contained in any customer’s form which may conflict with the following, unless expressly agreed in writing. These General Terms and Conditions are governed by Spanish law.Any reference made to trade terms (such as EXW, CIP, etc.) is deemed to be made to Incoterms published by the Internatio-nal Chamber of Commerce current at the date of conclusion of the contract.

2. ORDER CONFIRMATION

The payment of the total amount of the quantity indicated in the proforma invoice, previously reviewed and checked by the BUYER, will imply the confirmation of the order.The payment of a proforma issued by HOUTIQUE by the purchaser implies his acceptance unreserved of the general conditions of sales below. HOUTIQUE reserves the right to cancel any order of a customer with who there would be a payment issue of a previous order. All prices are in Euros, and are exclusive of tax and carriage. HOUTIQUE reserves the right to modify invoiced prices. The final price is fixed at the proforma invoice.

3. ORDER CANCELLATION HOUTIQUE

reserves the right to refuse cancellation of an order where the goods are ready for dispatch or in the process of manufacture. In certain circumstances HOUTIQUE may accept alterations tO or cancellation of an order where the BUYER agrees to bear any cost incurred.

4. TRANSPORT CONDITIONS

Transport charges shall be borne by the BUYER (up to the order amount indicated below), either it is organized by our carrier. The products are delivered at the delivery address given by the customers, specified in the lower part of the proforma invoice. HOUTIQUE reserves the right to do partial deliveries. In case of noticing any damage to the merchandise, the BUYER shall write it down in detail and obligatorily on HOUTIQUE’s delivery note and on the one of the transport company, to be remitted later (both of them) to info@houtique.es . Delivery time will depend on the type product and quantity. HOUTIQUE is not responsible for delays in delivery due to any cause beyond our control.HOUTIQUE reserves the right to modify the above conditions for certain EU

countries. In this case, these will be previously agreed with the BUYER.

5. SHIPPING COSTS

For EU countries’ customers, deliveries will be free of charge for orders over 1000 € (Euros) (Ex VAT). Below this amount, HOUTIQUE will include the shipping costs in the proforma invoice, to be paid by the BUYER.

6. COMPLAINTS AND CLAIMS

Any complaints relating to packing, quantity, number or features of the Products, must be notified to HOUTIQUE, in writing, within 5 working days from receipt of the products in the way explained in the section 4, TRANSPORT CONDITIONS, paragraph 2; failing such notification implies that the BUYER’s right to claim the above defects will be forfeited. The goods must be retained by the BUYER but must not be returned to HOUTIQUE without the specific agreement of HOUTIQUE.HOUTIQUE contemplates a 2-year guarantee. HOUTIQUE will not be responsible for any damage on the product after the delivery caused by incorrect handling, misuse or actions that contradict the specifications of use It is agreed that any HOUTIQUE’s liability (both contractual or extra-contractual) which may arise from the Products supplied and/or their resale (e.g. compensation of damages, loss of profit, damage to the image, etc.) is expressly excluded.If the complaint is not due to the transport, HOUTIQUE, upon verification, will exchange your products, or send you a credit note (previously agreed). Any complaint made out one year after reception will not be accepted. Any return of products in our warehouse without any authorization nor a return referen-ce number us will be refused.

7. PAYMENT CONDITIONS

The order will be processed, prepared and shipped after receiving the payment of the total amount indicated in the proforma invoice.Any banking costs shall be at the expense of the BUYER.

8. INTELLECTUAL PROPERTY

All texts and images copied on HOUTIQUE’s website are reserved under copyright and under title deed and all over the world. On this account and in accordance with the disposals of the Title deed Code, only the ability for a private use under different or even more restrictive disposals of the Title deed code is authorized.

Any other use will be considered as an imitation and will be punished on the account of the Title deed, except previous authorization of HOUTIQUE. Any partial or total copy of HOUTIQUE’s catalogue is prohibited.

9. DISPUTE RESOLUTION

Any conflict that may arise between HOUTIQUE and BUYER(S) will be solved through the application of the Spanish Law in force.

ESPAÑOL

1. CONDICIONES PREVIAS

Estos Términos de ventas regulan las transacciones entre HOUTIQUE y sus clientes (COMPRADORES). HOUTIQUE rechaza específicamente cualquier otros Términos o Condicio-nes de Venta contenidos en el formulario de cualquier cliente que puedan entrar en conflicto con los siguientes, a menos que se acuerde expresamente por escrito.Los presentes Términos y Condiciones Generales se rigen por la Legislación española vigente. Cualquier referencia hecha a términos comerciales (tales como EXW, CIP, etc.) se considerará realizada a los Incoterms publicados por la Cámara de Comercio Internacional en la fecha de la conclusión del contrato.

2. CONFIRMACIÓN DE PEDIDOS

El pago del importe total de la cantidad indicada en la factura proforma, previamente revisada y verificada por el COMPRA-DOR, implicará la confirmación del pedido.El pago de una proforma emitida por HOUTIQUE por el comprador implica su aceptación sin reservas de las condicio-nes generales de venta siguientes. Todos los precios están en euros y no incluyen impuestos ni transporte. HOUTIQUE se reserva el derecho de modificar los precios facturados. El precio final se fija en la factura proforma.

3. CANCELACIÓN DE PEDIDOS HOUTIQUE

se reserva el derecho de rechazar la cancelación de un pedido cuando las mercancías estén listas para su envío o en el proceso de fabricación. En determinadas circunstan-cias, HOUTIQUE puede aceptar alteraciones o la cancelación de un pedido cuando el COMPRADOR acepta pagar los costos incurridos.

4. CONDICIONES DE TRANSPORTELos gastos de transporte correrán a cargo del COMPRADOR (hasta el importe del pedido indicado en la sección

5, SHIPPING COSTS), aunque esté organizado por nuestro transportis-ta. Los productos se entregarán en la dirección de entrega proporcionada por los clientes, especificada en la parte inferior de la factura proforma. HOUTIQUE se reserva el derecho de realizar entregas parciales.En caso de notar cualquier daño en la mercancía, el COMPRA-DOR deberá escribirla detallada y obligatoriamente en el albarán de entrega de HOUTIQUE y en el

de la empresa de transporte, que se enviarán posteriormente (ambos) a info@houtique.es .El tiempo de entrega dependerá del tipo de producto y la cantidad. HOUTIQUE no es responsable de los retrasos en la entrega debidos a cualquier causa fuera de nuestro control.HOUTIQUE se reserva el derecho de modificar las condiciones anteriores para ciertos países de la UE. En estos casos, estos serán previamente acordados con el COMPRADOR.

5. GASTOS DE ENVÍO

Para los clientes de los países de la UE, las entregas serán gratuitas para pedidos superiores a 1000 € (Euros) (sin IVA). Por debajo de este importe, HOUTIQUE incluirá los gastos de envío en la factura proforma, que deberá pagar el COMPRADOR.

6. QUEJAS Y RECLAMACIONES

Cualquier queja relacionada con el embalaje, la cantidad, el número o las características de los Productos, debe ser notificada a HOUTIQUE, por escrito, dentro de los 5 días hábiles a partir de la recepción de los productos en la forma explicada en la sección

7. CONDICIONES DE PAGOEl pedido se procesará, preparará y enviará después de recibir el pago del importe total indicado en la factura proforma. Cualquier gasto bancario correrá a cargo del COMPRADOR.

8. PROPIEDAD INTELECTUAL

Todos los textos e imágenes copiados en el sitio web de HOUTIQUE están reservados bajo copyright y bajo título de propiedad y en todo el mundo. A este respecto y de acuerdo con las disposiciones del Código de propiedad, solo se autoriza la posibilidad de un uso privado bajo disposiciones diferentes o incluso más restrictivas del Código. Cualquier otro uso será considerado como una imitación y será castigado, excepto la autorización previa de HOUTIQUE. Queda prohibida cualquier copia parcial o total del catálogo de HOUTIQUE.

9. RESOLUCION DE CONFLICTOS

Cualquier conflicto que pueda surgir entre HOUTIQUE y el COMPRADOR(ES) se resolverá mediante la aplicación de la Legislación española vigente.exchange your products, or send you a credit note (previously agreed). Any complaint made out one year after reception will not be accepted. Any return of products in our warehouse without any authorization nor a return referen-ce number us will be refused.

Watch out,
stereotypes
not allowed!

Let's talk!

HOUTIQUE



HOUTIQUE®